

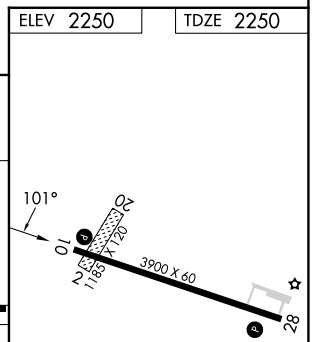
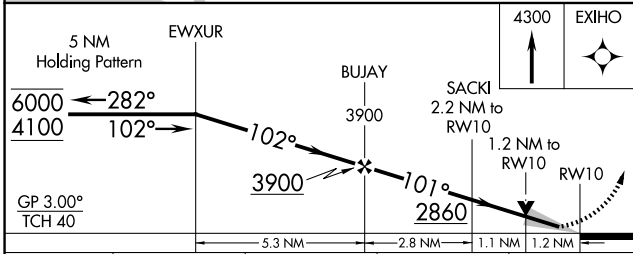
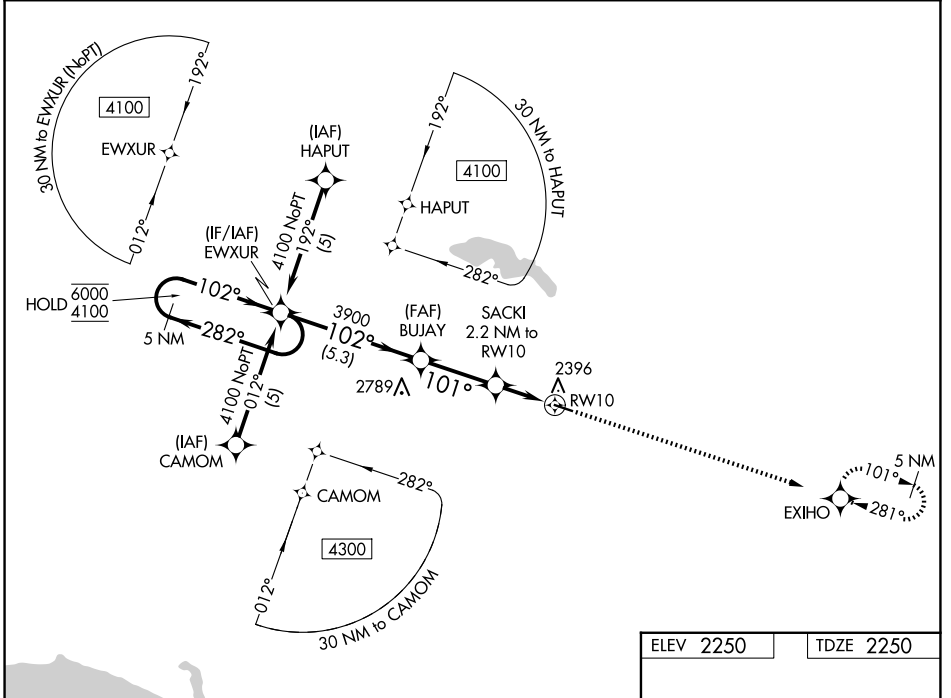
WAAS CH 87146 W10A	APP CRS 101°	Rwy Ldg 3900 TDZE 2250 Apt Elev 2250
--	------------------------	---

RNAV (GPS) RWY 10

STANLEY MUNI (Ø8D)

RNP APCH - GPS.	MISSED APPROACH: Climb to 4300 direct EXIHO and hold.
<p>▼ For uncompensated Baro-VNAV systems, LNAV/VNAV NA below -19°C or above 54°C.</p> <p>▲</p>	

AWOS-3 121.1	MINNEAPOLIS CENTER 127.6 279.6	CTAF 122.9 Ø
------------------------	--	-------------------------------



CATEGORY	A	B	C	D
LPV DA	2450-1	200 (200-1)		NA
LNAV/VNAV DA	2538-1	288 (300-1)		NA
LNAV MDA	2660-1	410 (500-1)		NA
CIRCLING	2720-1 470 (500-1)	2940-1 690 (700-1)		NA



NC-1, 14 MAY 2026 to 11 JUN 2026

NC-1, 14 MAY 2026 to 11 JUN 2026