

WAAS CH 86248 W28A	APP CRS 282°	Rwy Ldg TDZE Apt Elev	3900 2242 2250
--	------------------------	-----------------------------	---

RNAV (GPS) RWY 28

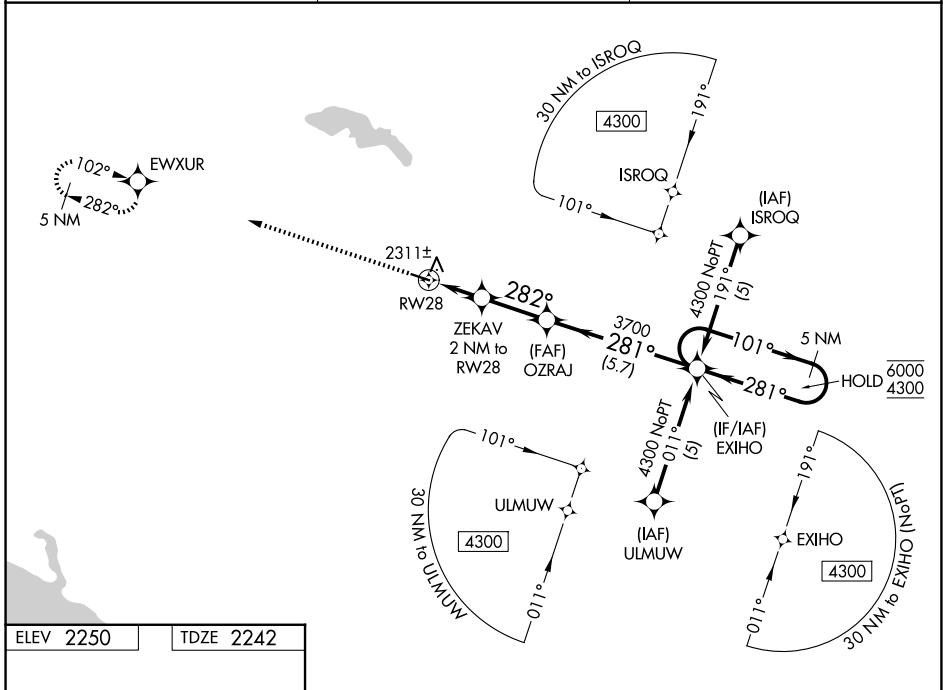
STANLEY MUNI (Ø8D)

RNP APCH - GPS.

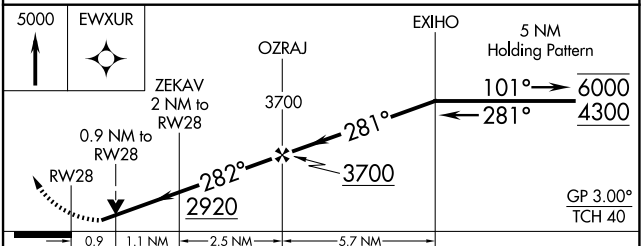
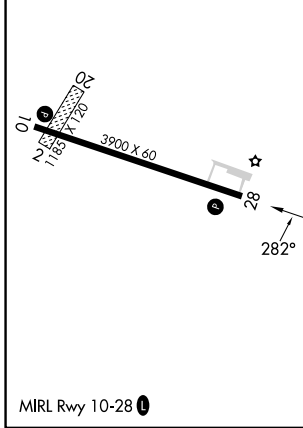
⚠ For uncompensated Baro-VNAV systems, LNAV/VNAV NA below -19°C or above 54°C. Rwy 28 helicopter visibility reduction below ¾ SM NA.

⚠ MISSED APPROACH: Climb to 5000 direct EWXUR and hold, continue climb-in-hold to 5000.

AWOS-3 121.1	MINNEAPOLIS CENTER 127.6 279.6	CTAF 122.9 ⓪
------------------------	--	-------------------------------



ELEV 2250	TDZE 2242
-----------	-----------



CATEGORY	A	B	C	D
LPV DA	2492-1	250 (300-1)		NA
LNAV/VNAV DA	2492-1	250 (300-1)		NA
LNAV MDA	2580-1	338 (400-1)		NA
CIRCLING	2720-1 470 (500-1)	2940-1 690 (700-1)		NA

NC-1, 14 MAY 2026 to 11 JUN 2026

NC-1, 14 MAY 2026 to 11 JUN 2026

MIRL Rwy 10-28 **⓪**

GP 3.00°
TCH 40