

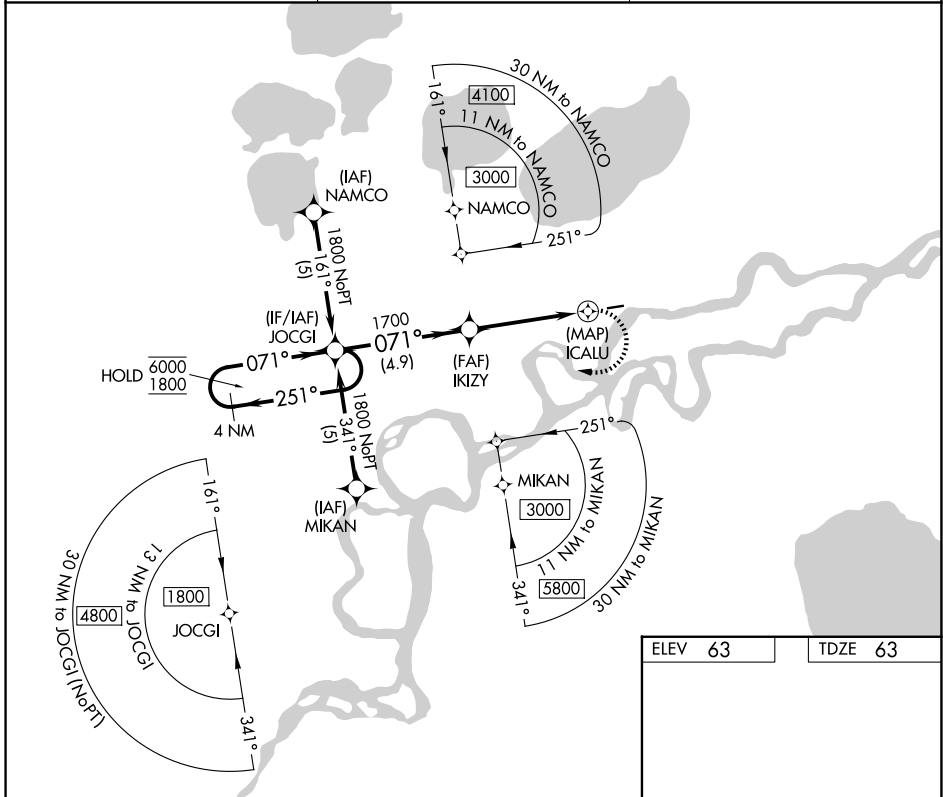
APP CRS	Rwy Ldg	<b>3198</b>
<b>071°</b>	TDZE	<b>63</b>
	Apt Elev	<b>63</b>

# RNAV (GPS) RWY 7

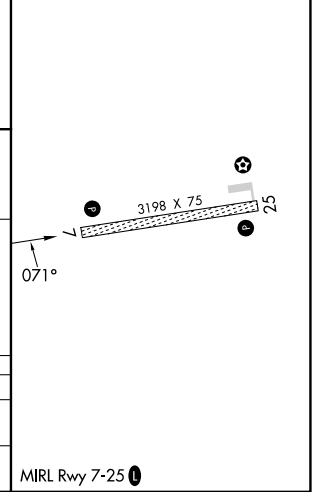
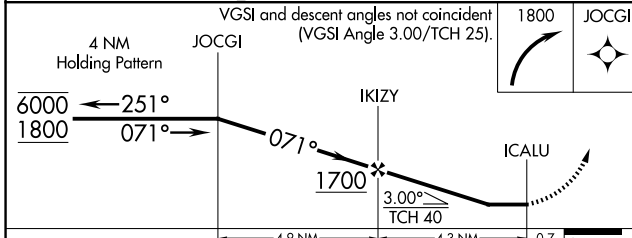
KALSKAG (KLG)(PALG)

RNP APCH - GPS.	MISSED APPROACH: Climbing right turn to 1800 direct JOCGI and hold.
<p><b>▼</b> Rwy 7 helicopter visibility reduction below 1 SM NA.</p> <p><b>▲</b> Procedure NA at night. Circling NA north of Rwy 7-25.</p>	

AWOS-3P <b>119.025</b>	ANCHORAGE CENTER <b>118.15 251.05</b>	UNICOM <b>122.8 (CTAF) 0</b>
---------------------------	--	---------------------------------



ELEV 63	TDZE 63
---------	---------



CATEGORY	A	B	C	D
LNVA MDA	560-1	497 (500-1)		NA
CIRCLING	560-1 497 (500-1)	700-1 637 (700-1)		NA

AK, 14 MAY 2026 to 09 JUL 2026

AK, 14 MAY 2026 to 09 JUL 2026