

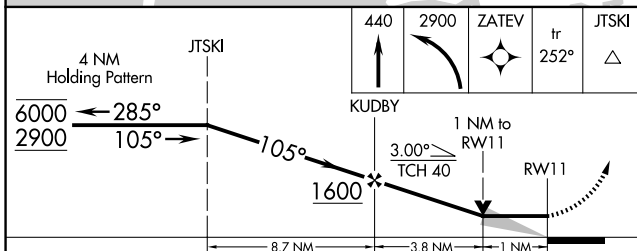
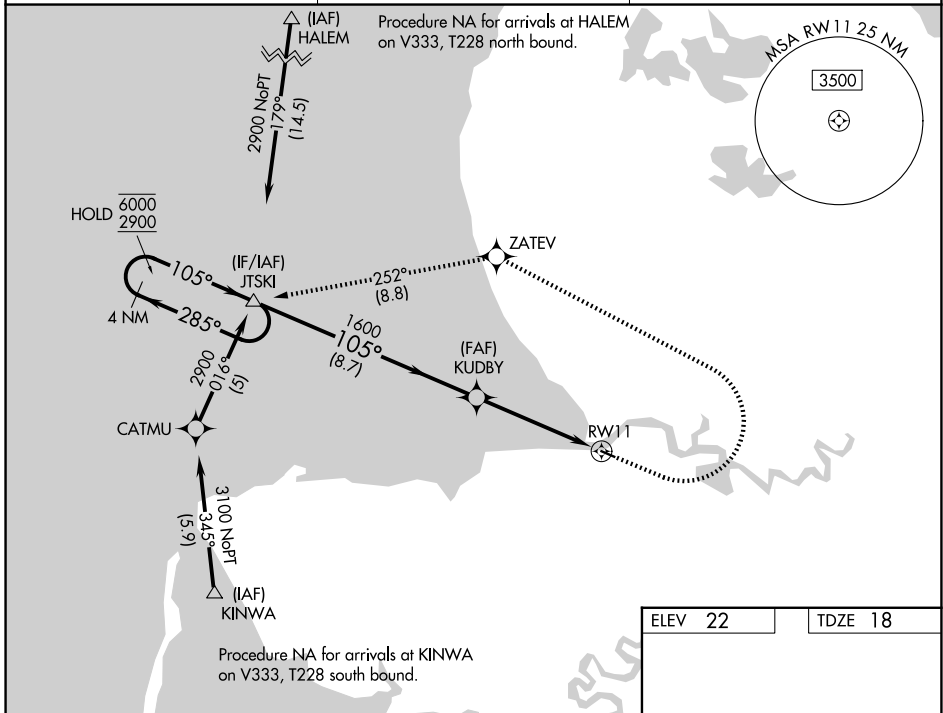
WAAS CH <b>77548</b> <b>W11A</b>	APP CRS <b>105°</b>	Rwy Ldg TDZE Apt Elev	<b>3001</b> <b>18</b> <b>22</b>
--	------------------------	-----------------------------	---------------------------------------

# RNAV (GPS) RWY 11

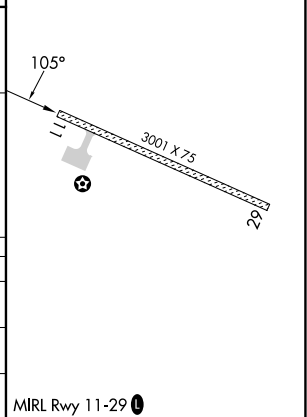
SCAMMON BAY (SCM) (PACM)

RNP APCH - GPS.	<p>⚠ Circling NA south of Rwy 11-29. Circling Rwy 29 NA at night. VDP NA when using VAK/PAVA altimeter setting. When local altimeter setting not received, use VAK/PAVA altimeter setting and increase all MDA's 60 feet.</p> <p>❄ -20°C</p>	<p>MISSED APPROACH: Climb to 440, then climbing left turn to 2900 direct ZATEV then on track 252° to JTSKI and hold.</p>
-----------------	--	--

AWOS-3P <b>118.425</b>	ANCHORAGE CENTER <b>124.5</b>	UNICOM <b>123.0 (CTAF) 0</b>
---------------------------	----------------------------------	---------------------------------



ELEV 22	TDZE 18
---------	---------



CATEGORY	A	B	C	D
LP MDA	380-1	362 (400-1)		NA
LNVA MDA	1100-1¼ 1082 (1100-1¼)	1100-1½ 1082 (1100-1½)		NA
CIRCLING	1100-1¼ 1078 (1100-1¼)	1100-1½ 1078 (1100-1½)		NA