

WAAS CH 42529 W29A	APP CRS 270°	Rwy Ldg TDZE 18 Apt Elev 22	3001
--	------------------------	---	-------------

RNAV (GPS) RWY 29

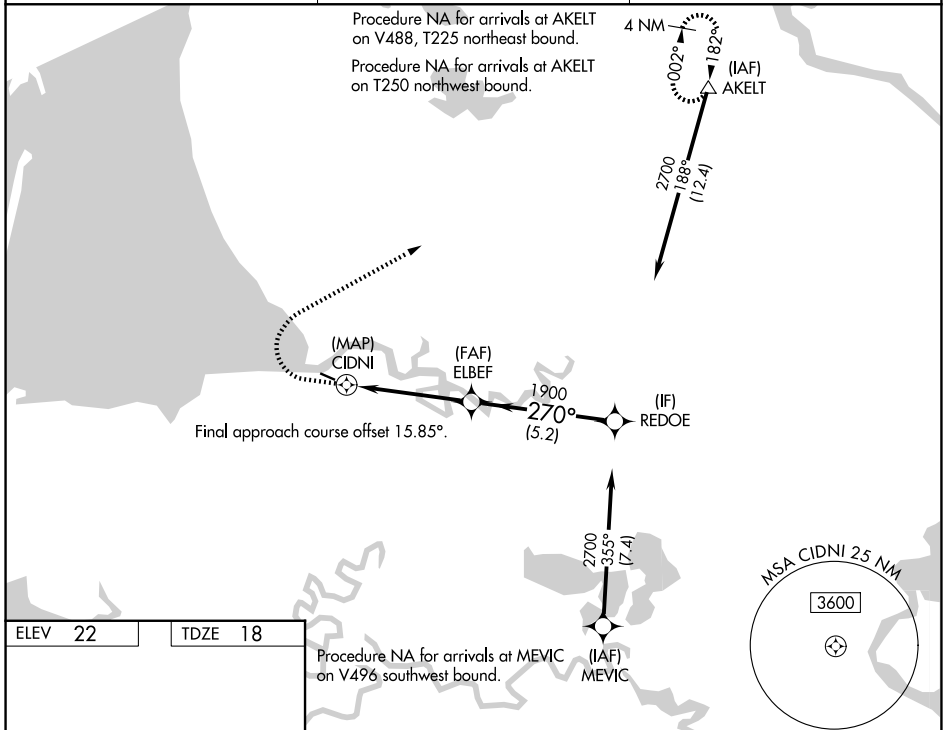
SCAMMON BAY (SCM) (PACM)

RNP APCH - GPS.

Circling NA south of Rwy 11-29. Rwy 29 helicopter visibility reduction below 1 SM NA. When local altimeter setting not received, use VAK/PAVA altimeter setting and increase all MDAs 60 feet. Straight-in and Circling Rwy 29 NA at night.

MISSED APPROACH: Climb to 440, then climbing right turn to 4000 direct AKELT and hold.

AWOS-3P 118.425	ANCHORAGE CENTER 124.5	UNICOM 123.0 (CTAF) 0
---------------------------	----------------------------------	---------------------------------



ELEV 22	TDZE 18	Procedure NA for arrivals at MEVIC (IAF) on V496 southwest bound.			
440	4000	AKELT	REDOE		
		0.5	4.5 NM	5.2 NM	
CATEGORY		A	B	C	D
LP	MDA	900-1¼ 882 (900-1¼)		NA	
LNAV	MDA	1100-1¼ 1082 (1100-1¼)	1100-1½ 1082 (1100-1½)	NA	
CIRCLING		1100-1¼ 1078 (1100-1¼)	1100-1½ 1078 (1100-1½)	NA	