

|  |                        |                             |                                       |
|--|------------------------|-----------------------------|---------------------------------------|
| WAAS<br>CH <b>87033</b><br><b>W17A</b> | APP CRS<br><b>173°</b> | Rwy Ldg<br>TDZE<br>Apt Elev | <b>3200</b><br><b>20</b><br><b>20</b> |
|--|------------------------|-----------------------------|---------------------------------------|

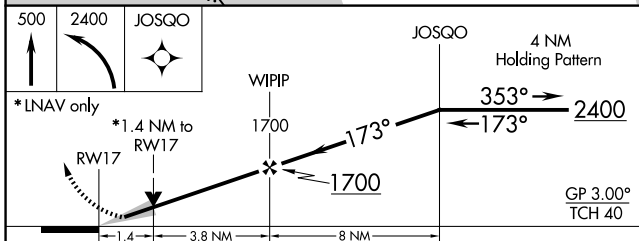
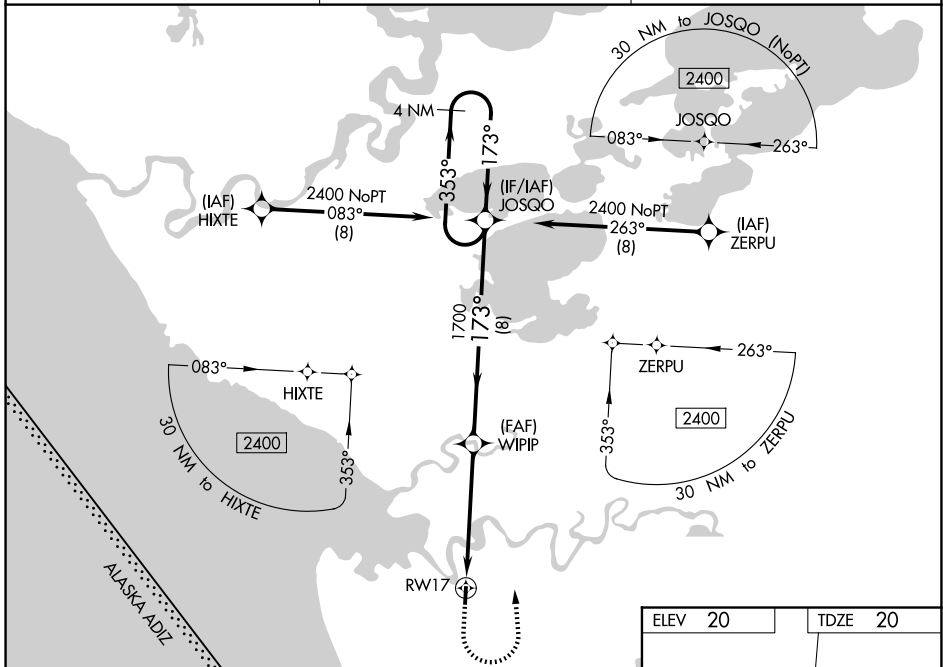
# RNAV (GPS) RWY 17

KIPNUK (IIK) (PAKI)

**⚠** Baro-VNAV NA when using Toksook Bay altimeter setting. For uncompensated Baro-VNAV systems, LNAV/VNAV NA below -20°C (-4°F) or above 54°C (130°F). DME/DME RNP-0.3 NA. Procedure NA at night. VDP NA when using Toksook Bay altimeter setting. When local altimeter setting not received use Toksook Bay altimeter setting; increase LPV DA to 389 feet and visibility all Cats ¼ SM. Increase LNAV/VNAV DA to 553 feet and visibility all Cats ½ SM. Increase all MDA 120 feet. Increase LNAV Cat C and D visibility to 1¼ SM, Circling Cat C to 2 SM, Cat D to 2¼ SM.

**MISSED APPROACH:**  
Climb to 500 then climbing left turn to 2400 direct JOSQO and hold.

|                           |  |                        |
|---------------------------|--|------------------------|
| AWOS-3P<br><b>118.325</b> | ANCHORAGE CENTER<br><b>125.2 372.0</b> | CTAF<br><b>122.7 0</b> |
|---------------------------|--|------------------------|



|                  |         |
|------------------|---------|
| ELEV 20          | TDZE 20 |
|                  |         |
| MIRL Rwy 17-35 0 |         |

| CATEGORY     | A                   | B           | C      | D                    |
|--------------|---------------------|-------------|--------|----------------------|
| LPV DA       | 270-1 250 (300-1)   |             |        |                      |
| LNAV/VNAV DA | 434-1⅜ 414 (500-1⅜) |             |        |                      |
| LNAV MDA     | 520-1               | 500 (500-1) | 520-1⅜ | 500 (500-1⅜)         |
| CIRCLING     | 580-1               | 560 (600-1) | 580-1½ | 580-2<br>560 (600-2) |

AK, 14 MAY 2026 to 09 JUL 2026

AK, 14 MAY 2026 to 09 JUL 2026