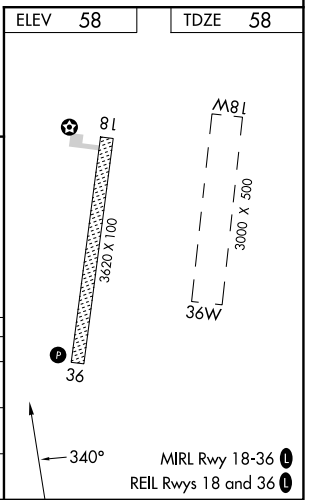
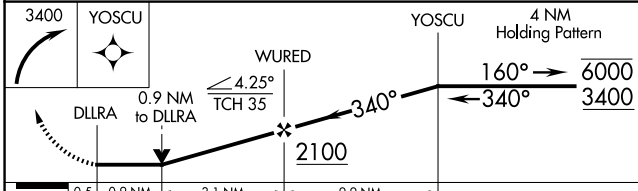
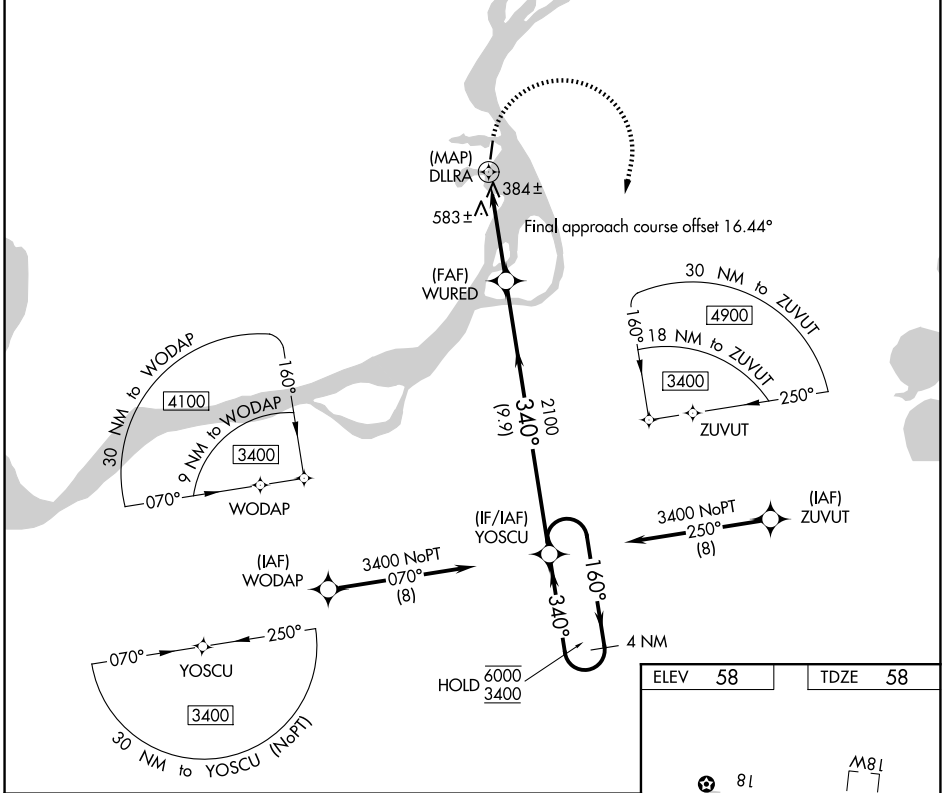


WAAS CH <b>93942</b> <b>W36A</b>	APP CRS <b>340°</b>	Rwy Ldg <b>3620</b> TDZE <b>58</b> Apt Elev <b>58</b>
--	------------------------	---

# RNAV (GPS) RWY 36

RUSSIAN MISSION (RSH)(PARS)

RNP APCH. Circling Rwy 18 NA at night. Rwy 36 helicopter visibility reduction below 3/4 SM NA. -30°C		FINAL APPROACH: Climbing right turn to 3400 direct YOSCU and hold.
AWOS-3P <b>118.375</b>	ANCHORAGE CENTER <b>118.15 251.05</b>	CTAF <b>122.9</b>



CATEGORY	A	B	C	D
LP MDA	700-1 642 (700-1)		NA	
LNAV MDA	840-1 782 (800-1)		NA	
CIRCLING	840-1 782 (800-1)	840-1¼ 782 (800-1¼)	1120-3 1062 (1100-3)	1360-3 1302 (1400-3)

AK, 14 MAY 2026 to 09 JUL 2026

AK, 14 MAY 2026 to 09 JUL 2026