

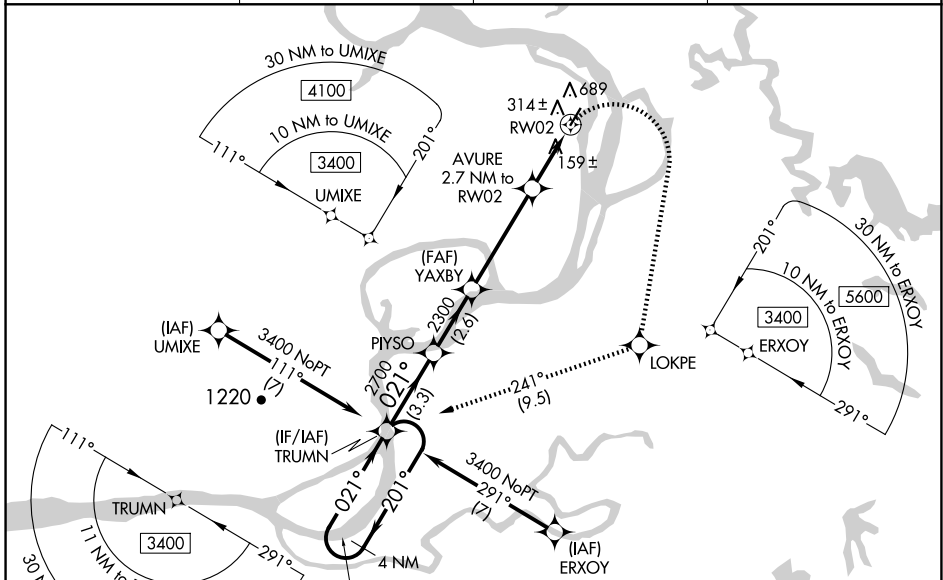
WAAS CH 57947 W02A	APP CRS 021°	Rwy Idg 4000 TDZE 74 Apt Elev 75
--	------------------------	---

RNAV (GPS) RWY 2

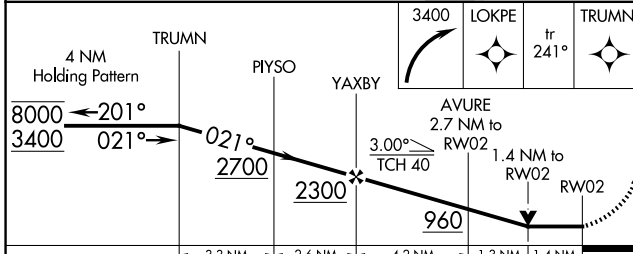
HOLY CROSS (HCA) (PAHC)

RNP APCH - GPS.	MISSED APPROACH: Climbing right turn to 3400 direct LOKPE and on track 241° to TRUMN and hold, continue climb-in-hold to 3400.
<p>▼ Circling Rwy 20 NA at night. Circling NA west of Rwy 2-20. Rwy 2 helicopter visibility reduction below 3/4 SM NA. VDP NA when using Anvik altimeter setting.</p> <p>▲ When local altimeter setting not received, use Anvik altimeter setting and increase all MDAs 120 feet and LNAV visibility Cat B, C and D 1/2 SM, and LP visibility Cat C and D 3/8 SM, and Circling all visibilities 1/2 SM.</p> <p>☁ -28°C</p>	

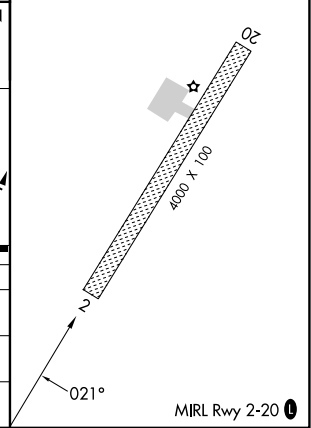
AWOS-3P 118.325	ANCHORAGE CENTER 118.15 251.05	KENAI RADIO 122.45	CTAF 122.8
---------------------------	--	------------------------------	----------------------



ELEV 75	TDZE 74
---------	---------



CATEGORY	A	B	C	D
LP MDA	560-1	486 (500-1)	560-1 3/8	486 (500-1 3/8)
LNAV MDA	800-1	726 (800-1)	800-2	726 (800-2)
CIRCLING	800-1	725 (800-1)	800-2	800-2 1/4
			725 (800-2)	725 (800-2 1/4)



AK, 14 MAY 2026 to 09 JUL 2026

AK, 14 MAY 2026 to 09 JUL 2026