

WAAS CH <b>60948</b> <b>W20A</b>	APP CRS <b>201°</b>	Rwy Idg <b>4000</b> TDZE <b>75</b> Apt Elev <b>75</b>
--	------------------------	---

# RNAV (GPS) RWY 20

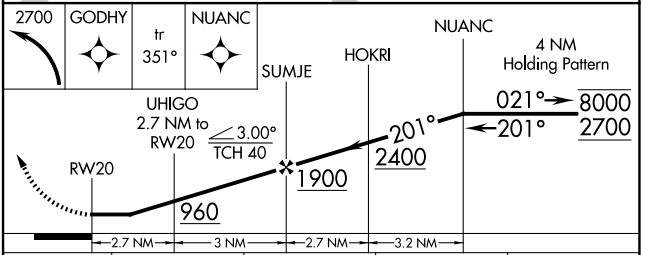
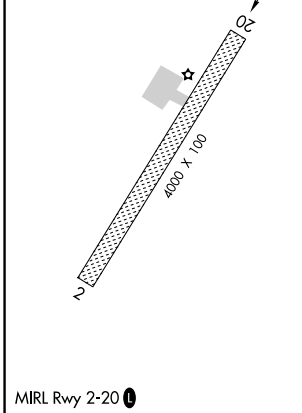
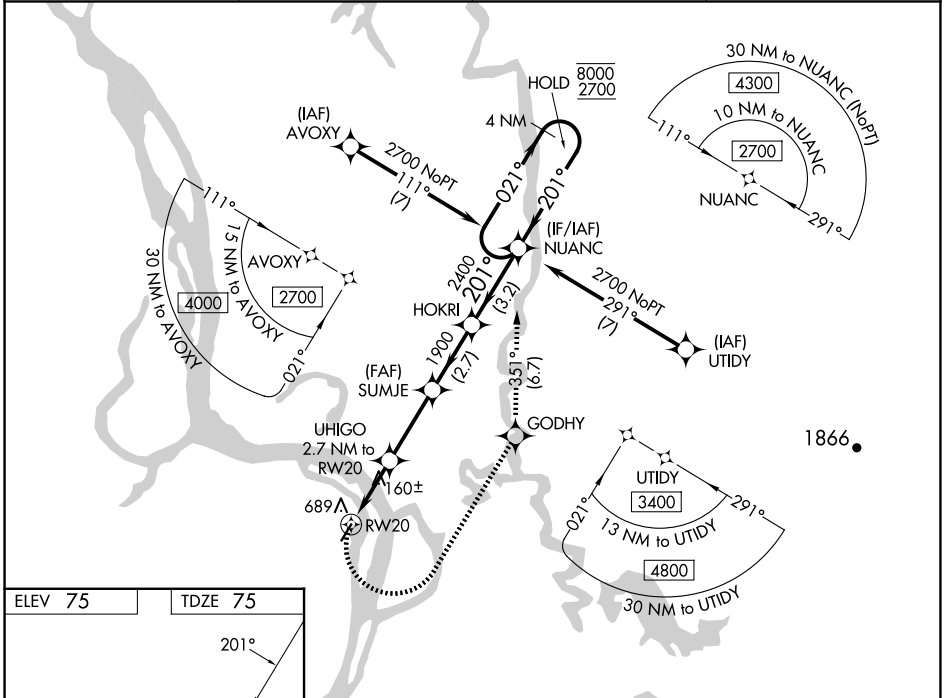
HOLY CROSS (HCA)(PAHC)

RNP APCH - GPS.

**⚠** Circling NA west of Rwy 2-20. Rwy 20 helicopter visibility reduction below 1 SM NA. When local altimeter setting not received, use Anvik altimeter setting and increase all MDAs 120 feet, LNAV all visibilities ½ SM, LP visibilities Cats C and D ¾ SM, and Circling visibilities Cats B, C, and D ½ SM. Straight-in and Circling Rwy 20 NA at night.

**⚠** MISSED APPROACH: Climbing left turn to 2700 direct GODHY and on track 351° to NUANC and hold.

AWOS-3P <b>118.325</b>	ANCHORAGE CENTER <b>118.15 251.05</b>	KENAI RADIO <b>122.45</b>	CTAF <b>122.8</b> <b>Ⓛ</b>
---------------------------	--	------------------------------	-------------------------------



CATEGORY	A	B	C	D
LP MDA	420-1 345 (400-1)			
LNAV MDA	940-1 865 (900-1)	940-1¼ 865 (900-1¼)	940-2½ 865 (900-2½)	865 (900-2½)
CIRCLING	940-1¼ 865 (900-1¼)	940-2½ 865 (900-2½)	940-2¾ 865 (900-2¾)	940-2¾ 865 (900-2¾)

AK, 14 MAY 2026 to 09 JUL 2026

AK, 14 MAY 2026 to 09 JUL 2026