

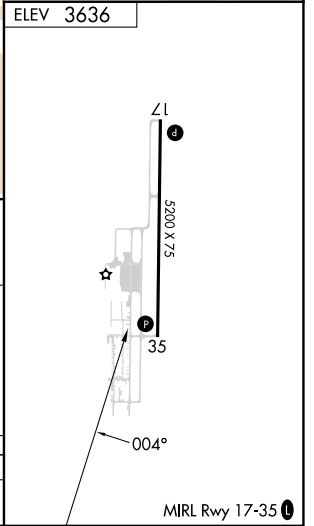
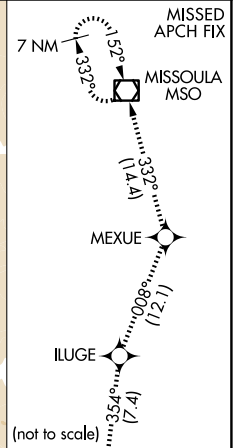
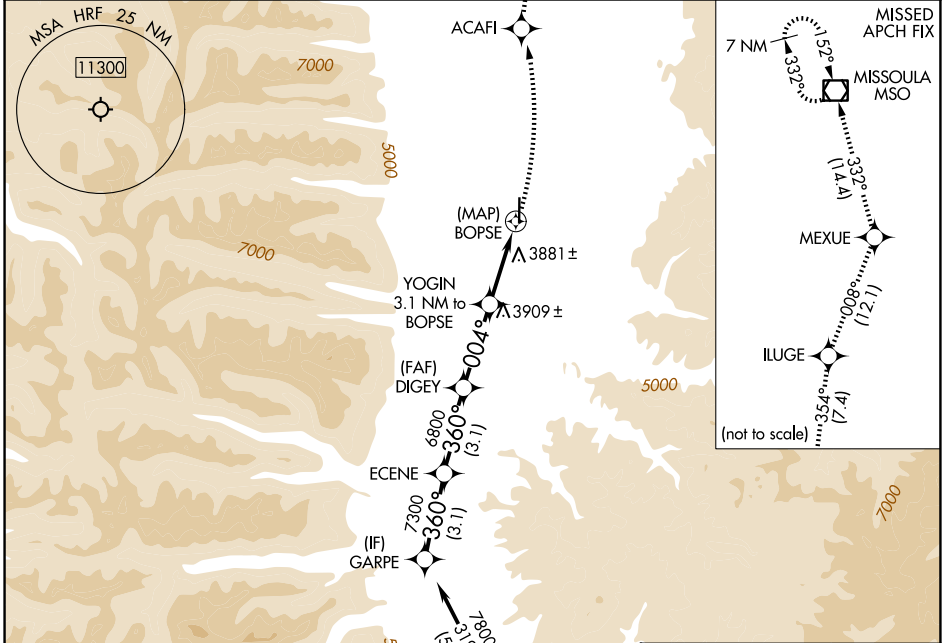
APP CRS 004°	Rwy Ldg TDZE Apt Elev	N/A N/A 3636
------------------------	-----------------------------	---

RNAV (GPS)-A

RAVALLI COUNTY (H.R.F.)

RNP APCH-GPS.	MISSED APPROACH: Climbing left turn to 11200 direct ACAFI and on track 354° to ILUGE and track 008° to MEXUE and track 332° to MISSOULA VOR/DME and hold.
▼ Circling to Rwy 35 NA at night. Rwy 35 helicopter visibility reduction below 1 SM NA.	

AWOS-3P 119.825	SALT LAKE CENTER 132.4 338.3	UNICOM 122.8 (CTAF)
---------------------------	--	-------------------------------



	11200	ACAFI	ILUGE	MEXUE	MSO
		✦	✦	✦	◻
		tr 354°	tr 008°	tr 332°	
GARPE	ECENE	DIGEY	YOGIN	BOPSE	
7800	7300	6800	5380		
	360°	004°			
	3.1 NM	3.1 NM	3.1 NM	3.1 NM	
CATEGORY	A	B	C	D	
CIRCLING	4240-1 604 (700-1)	4260-1 624 (700-1)	NA		

NW-1, 14 MAY 2026 to 11 JUN 2026

NW-1, 14 MAY 2026 to 11 JUN 2026