

APP CRS	Rwy Ldg	N/A
142°	TDZE	N/A
	Apt Elev	4149

# RNAV (GPS)-A

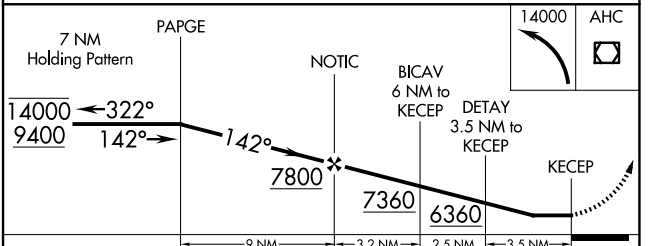
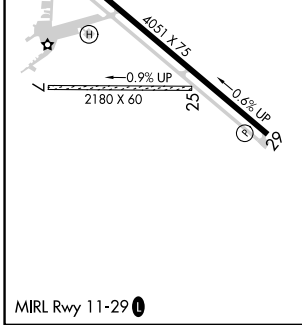
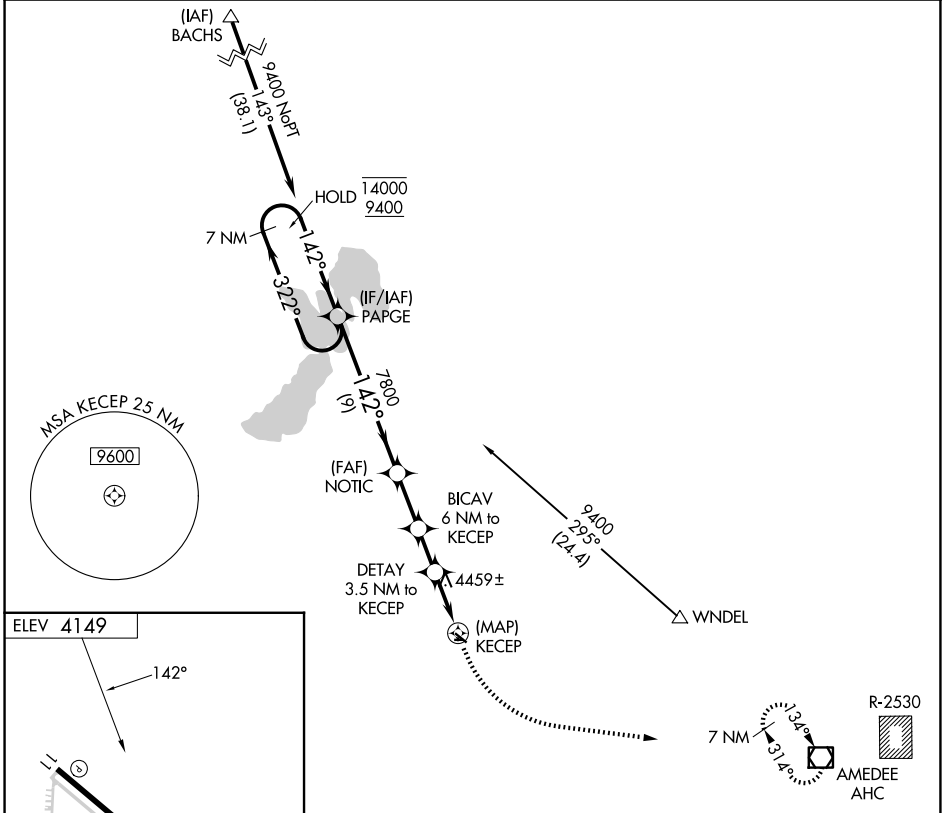
SUSANVILLE MUNI (SVE)

RNP APCH.

**⚠** Circling NA for Cat D southwest of Rwy 11-29.  
**⚠** NA When local altimeter setting not received, procedure NA.  
**⚠** -15°C Circling NA to Rwy 7/25.

MISSED APPROACH: Climbing left turn to 14000 direct AHC VOR/DME and hold, continue climb-in-hold to 14000.

AWOS-3 <b>133.8</b>	OAKLAND CENTER <b>128.8 285.5</b>	UNICOM <b>122.8 (CTAF)</b>
------------------------	--------------------------------------	-------------------------------



CATEGORY	A	B	C	D
CIRCLING	5260-1¼ 1111 (1200-1¼)	5260-1½ 1111 (1200-1½)	5780-3 1631 (1700-3)	6060-3 1911 (2000-3)

SW-2, 14 MAY 2026 to 11 JUN 2026

SW-2, 14 MAY 2026 to 11 JUN 2026