

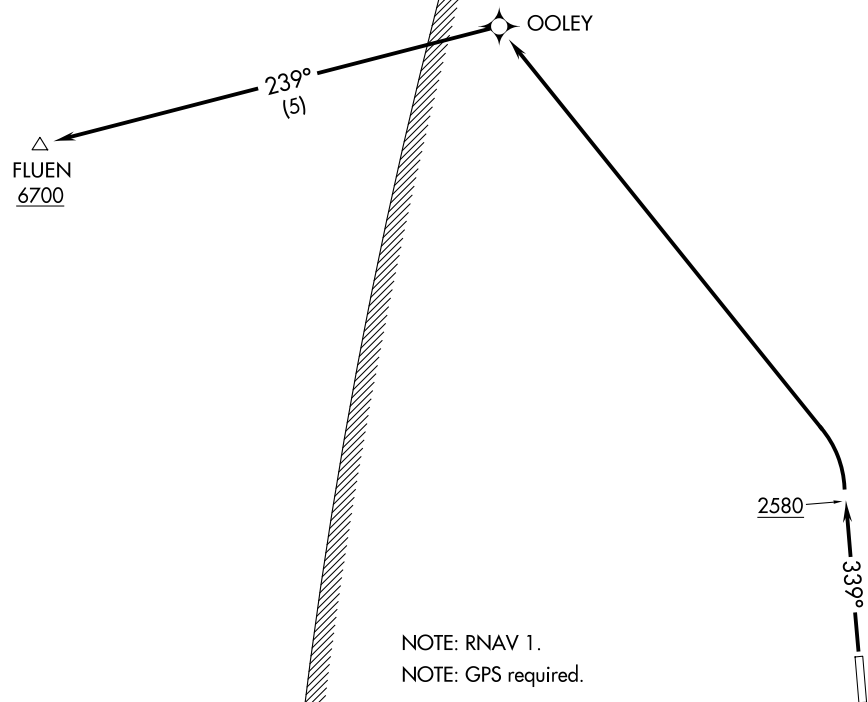
(FLUEN2.FLUEN) 21336

# FLUEN TWO DEPARTURE (OBSTACLE) (RNAV)

ELLS FLD/WILLITS MUNI (O28)  
AL-9480 (FAA) WILLITS, CALIFORNIA

OAKLAND CENTER  
132.2 350.3

MAXWELL 3 MOA



NOTE: RNAV 1.  
NOTE: GPS required.

### TAKEOFF MINIMUMS

Rwy 16: NA-air traffic.  
Rwy 34: Standard with minimum climb of  
360' per NM to 6700.

### TAKEOFF OBSTACLE NOTES

Rwy 34: Trees beginning 92' from DER, left and right of  
centerline, up to 100' AGL/2139' MSL.

NOTE: Chart not to scale.

## DEPARTURE ROUTE DESCRIPTION

TAKEOFF RUNWAY 34: Climb heading 339° to 2580, then left turn direct OOLEY,  
and on track 239° to cross FLUEN at or above 6700.

FLUEN TWO DEPARTURE (OBSTACLE) (RNAV)  
(FLUEN2.FLUEN) 30JUN11

WILLITS, CALIFORNIA  
ELLS FLD/WILLITS MUNI (O28)

SW-2, 14 MAY 2026 to 11 JUN 2026

SW-2, 14 MAY 2026 to 11 JUN 2026