

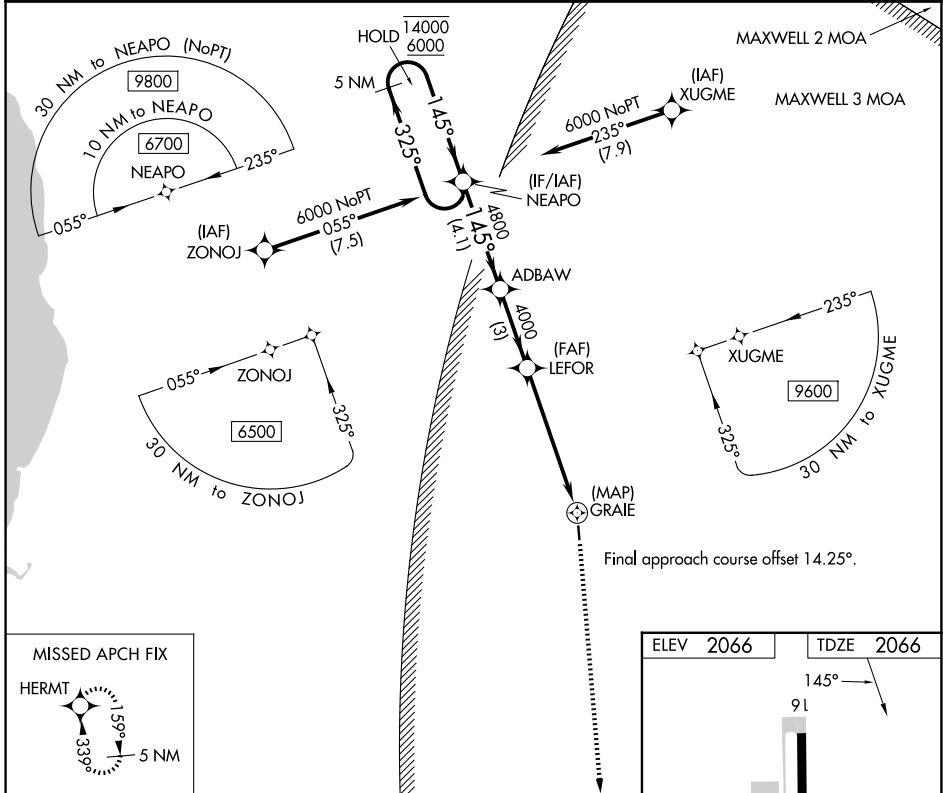
APP CRS	Rwy Ldg	2705
145°	TDZE	2066
	Apt Elev	2066

RNAV (GPS) RWY 16

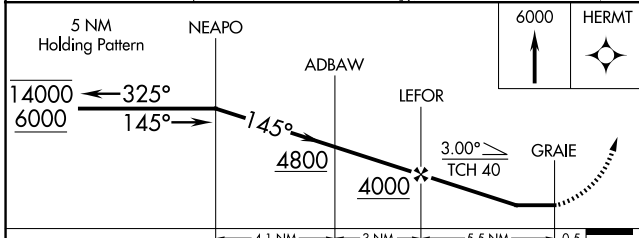
ELLS FLD/WILLITS MUNI (O28)

RNP APCH - GPS.	Procedure NA at night. Circling NA west of Rwy 16-34. Use Ukiah altimeter setting; when not received, procedure NA. Rwy 16 helicopter visibility reduction below 1 SM NA.	MISSED APPROACH: Climb to 6000 direct HERMT and hold.
-----------------	---	---

UKI ASOS 119.275	OAKLAND CENTER 132.2 350.3	UNICOM 122.8 (CTAF) 0
----------------------------	--------------------------------------	---------------------------------



MISSED APCH FIX



ELEV 2066	TDZE 2066
-----------	-----------

The vertical scale diagram shows a 1.4% upward slope. Key altitudes are 91 feet and 34 feet. The slope is labeled as 2705 X 75.

CATEGORY	A	B	C	D
LNVA MDA	3620-1¼ 1554 (1600-1¼)	3620-1½ 1554 (1600-1½)	3620-3 1554 (1600-3)	NA
CIRCLING	3620-1¼ 1554 (1600-1¼)	3620-1½ 1554 (1600-1½)	3620-3 1554 (1600-3)	NA

MIRL Rwy 16-34 0

SW-2, 14 MAY 2026 to 11 JUN 2026

SW-2, 14 MAY 2026 to 11 JUN 2026