

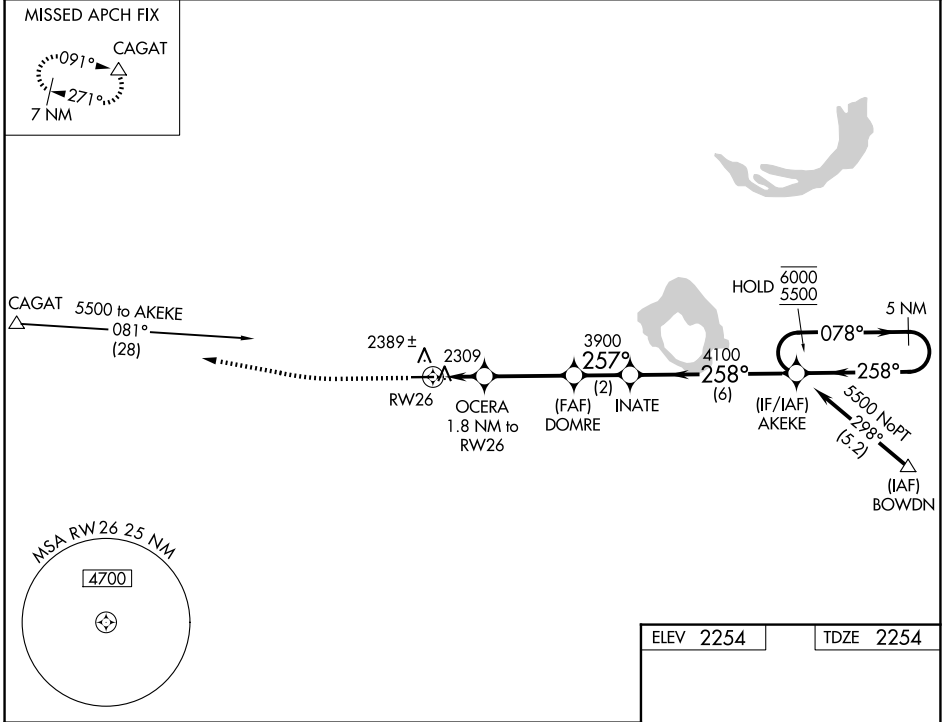
WAAS CH 97721 W26A	APP CRS 257°	Rwy Ldg TDZE Apt Elev	4500 2254 2254
--	------------------------	-----------------------------	---

RNAV (GPS) RWY 26

MALTA (M75)

RNP APCH. ▼	MISSED APPROACH: Climb to 2700, then climb to 6500 direct CAGAT and hold, continue climb-in-hold 6500.
----------------	--

AWOS-3 119.25	SALT LAKE CITY CENTER 126.85 305.2	AUNICOM 122.8 (CTAF) ①
-------------------------	--	----------------------------------



NW-1, 14 MAY 2026 to 11 JUN 2026

NW-1, 14 MAY 2026 to 11 JUN 2026

ELEV 2254	TDZE 2254
-----------	-----------

5 NM Holding Pattern

078° 6000

258° 5500

4500 X 75

26

257°

2700 6500 CAGAT

VGSI and descent angles not coincident (VGSI Angle 3.00/TCH 27).

OCERA 1.8 NM to RW26

DOMRE

INATE

AKEKE 5 NM Holding Pattern

0.9 NM to RW26

0.9 NM

3.00° TCH 40

257° 3900

258° 4100

078° 6000

258° 5500

0.9 NM | 0.9 NM | 3.2 NM | 2 NM | 6 NM

CATEGORY	A	B	C	D
LP MDA	2560-1	306 (400-1)		NA
LNAV MDA	2640-1	386 (400-1)		NA
CIRCLING	2800-1 546 (600-1)	2880-1 626 (700-1)		NA

MIRL Rwy 8-26 ①