

|             |          |             |
|-------------|----------|-------------|
| APP CRS     | Rwy Ldg  | <b>5032</b> |
| <b>309°</b> | TDZE     | <b>5723</b> |
|             | Apt Elev | <b>5737</b> |

# RNAV (GPS) RWY 31

ESCALANTE MUNI (1L7)

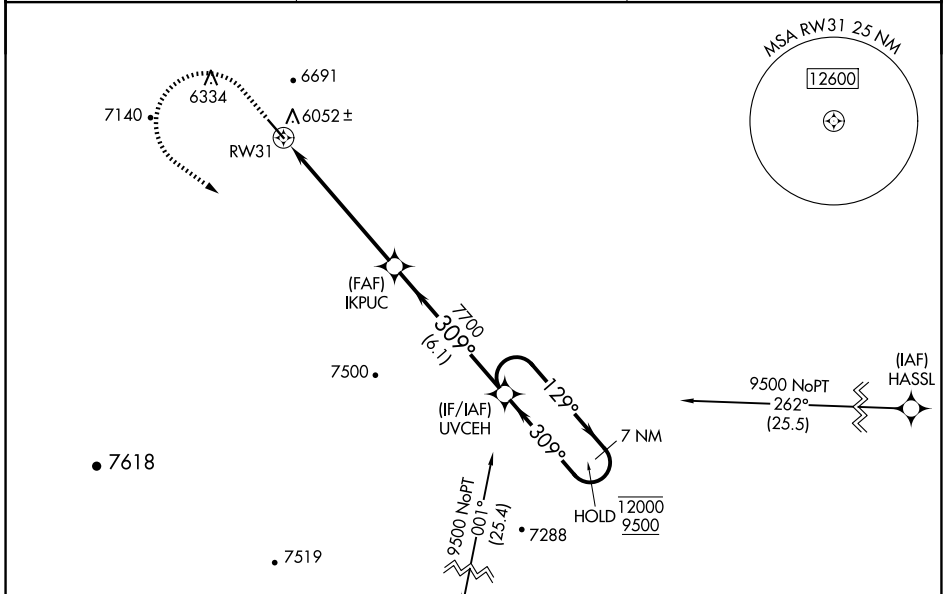
RNP APCH - GPS.

**▽** Baro-VNAV NA. Rwy 31 helicopter visibility reduction below 3/4 SM NA. Circling NA northeast of Rwy 13-31. Procedure NA at night. Use PGA allimeter setting.

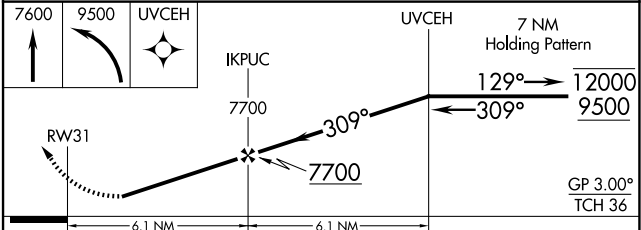
**⚠** NA

MISSED APPROACH: Climb to 7600 then climbing left turn to 9500 direct UVCEH and hold, continue climb-in-hold to 9500.  
 \*Missed approach requires minimum climb of 328 feet per NM to 8000.  
 #Missed approach requires minimum climb of 320 feet per NM to 8020.

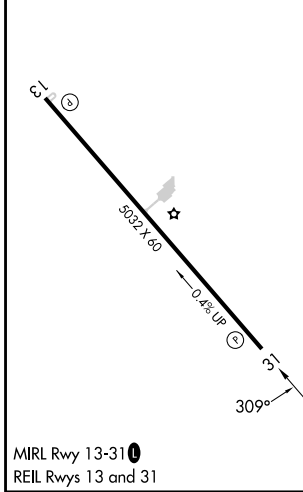
|                            |   |                                 |
|----------------------------|---|---------------------------------|
| PGA ASOS<br><b>120.625</b> | SALT LAKE CENTER<br><b>133.6 269.25</b> | UNICOM<br><b>122.8 (CTAF) 0</b> |
|----------------------------|---|---------------------------------|



|           |           |
|-----------|-----------|
| ELEV 5737 | TDZE 5723 |
|-----------|-----------|



| CATEGORY      | A                         | B                         | C | D  |
|---------------|---------------------------|---------------------------|---|----|
| LNAV/VNAV DA* | 6534-2½                   | 811 (800-2½)              |   | NA |
| LNAV MDA#     | 6840-1¼<br>1117 (1200-1¼) | 6840-1½<br>1117 (1200-1½) |   | NA |
| LNAV/VNAV DA  | 7169-6                    | 1446 (1500-6)             |   | NA |
| LNAV MDA      | 7280-1¼<br>1557 (1600-1¼) | 7280-1½<br>1557 (1600-1½) |   | NA |
| CIRCLING      | 7280-1¼<br>1543 (1600-1¼) | 7280-1½<br>1543 (1600-1½) |   | NA |



SW-4, 14 MAY 2026 to 11 JUN 2026

SW-4, 14 MAY 2026 to 11 JUN 2026