

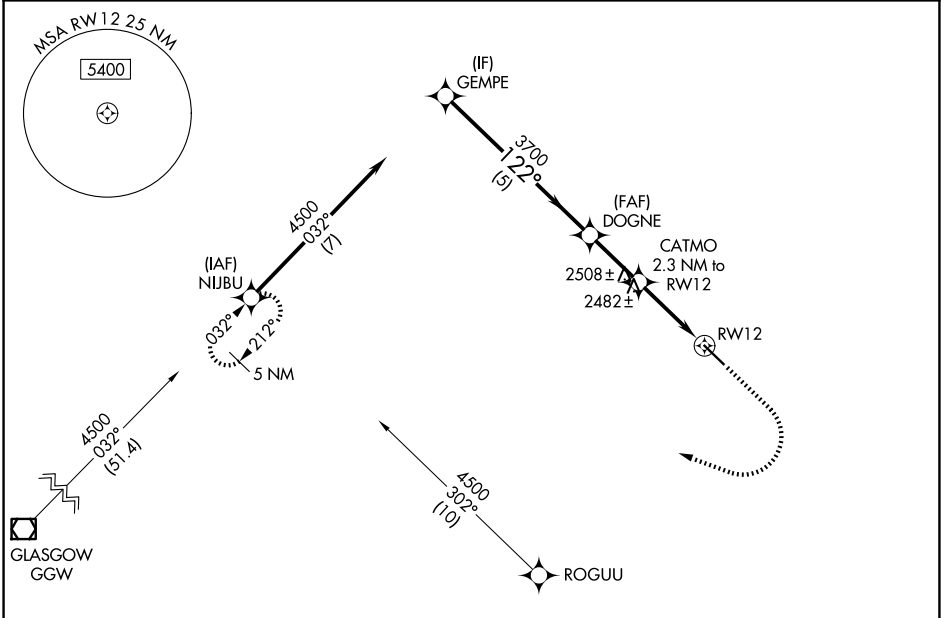
APP CRS 122°	Rwy Ldg TDZE Apt Elev	4020 2426 2434
------------------------	-----------------------------	---

RNAV (GPS) RWY 12

SCOBEY (9S2)

RNP APCH - GPS.	MISSED APPROACH: Climb to 2900 then climbing right turn to 4500 direct NIJBU and hold.
<p>▼ VDP NA when using PWD altimeter setting. Circling Rwy 30</p> <p>▲ NA at night. When local altimeter setting not received, use PWD altimeter setting and increase all MDAs 120 feet.</p>	

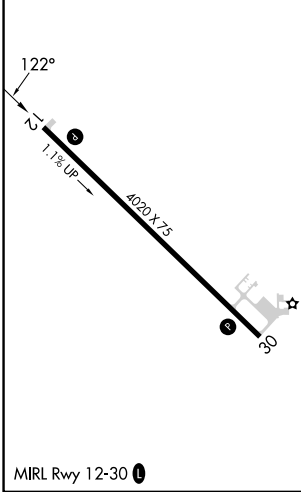
AWOS-3PT 128.325	SALT LAKE CITY CENTER 126.85 305.2	AUNICOM 122.8 (CTAF)
----------------------------	--	--------------------------------



NW-1, 14 MAY 2026 to 11 JUN 2026

NW-1, 14 MAY 2026 to 11 JUN 2026

ELEV 2434	TDZE 2426
-----------	-----------



<p>VGSI and descent angles not coincident (VGSI Angle 3.00/TCH 25).</p> <p>2900 4500 NIJBU</p> <p>4500</p> <p>122°</p> <p>3700</p> <p>3.00° TCH 40</p> <p>CATMO 2.3 NM to RWY12</p> <p>1 NM to RWY12 RWY12</p> <p>5 NM 1.7 NM 1.3 NM 1 NM</p>			
CATEGORY	A	B	C
LNAV MDA	2740-1	314 (400-1)	NA
CIRCLING	2940-1	506 (600-1)	NA