

WAAS CH 61031 W09A	APP CRS 086°	Rwy Ldg TDZE Apt Elev	4502 6046 6056
--	------------------------	-----------------------------	---

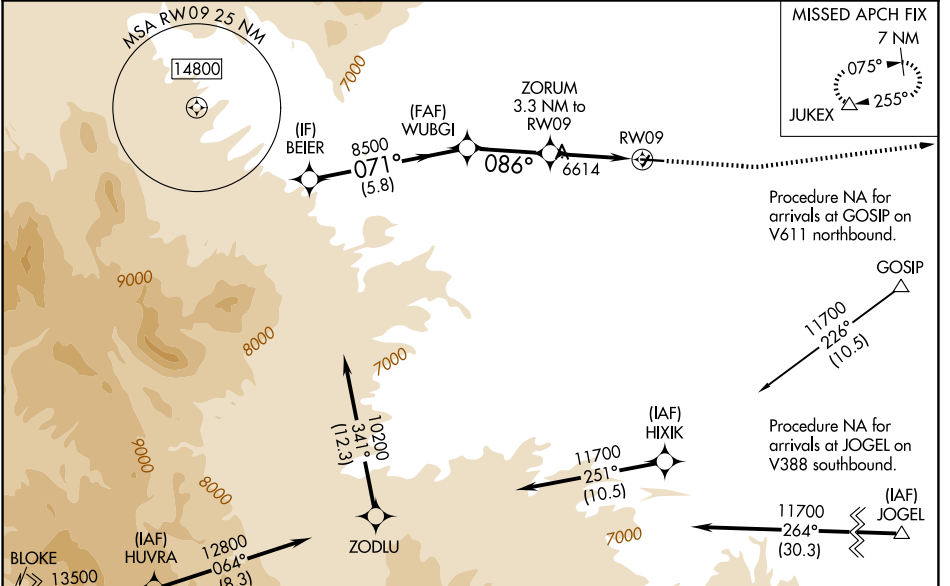
RNAV (GPS) RWY 9

SPANISH PEAKS AIRFIELD (4V1)

Baro-VNAV NA when using Trinidad altimeter setting. For uncompensated Baro-VNAV systems, procedure NA below -26°C (-14°F) or above 36°C (98°F). DME/DME RNP-0.3 NA. Helicopter visibility reduction below 1 SM NA.
 Rwy 9 Straight-in and Circling minimums NA at night. When local altimeter setting not received, use Trinidad altimeter setting and increase all DA 119 feet and MDA 120 feet; increase LPV all Cats visibility 1/8 mile and LNAV/VNAV all Cats visibility 3/8 mile, LNAV Cats A-B and Circling Cat B visibility 1/4 mile, LNAV Cat C visibility 1/2 mile.

MISSED APPROACH:
 Climb to 6900 then climbing left turn to 9400 direct JUKEK and hold.

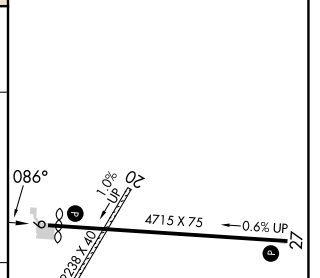
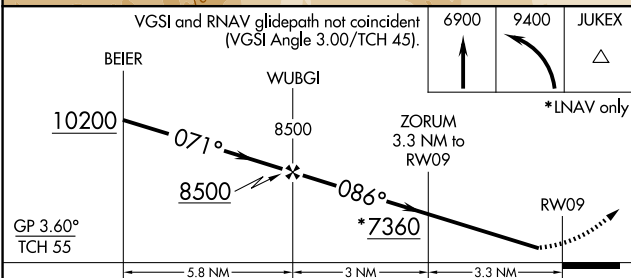
AWOS-3PT 123.6	DENVER CENTER 128.375 379.95	UNICOM 122.8 (CTAF) 0
--------------------------	--	---------------------------------



Procedure NA for arrivals at GOSIP on V611 northbound.

Procedure NA for arrivals at JOGEL on V388 southbound.

ELEV 6056	D	TDZE 6046
-----------	----------	-----------



CATEGORY	A	B	C	D
LPV DA	6347-1		301 (300-1)	NA
LNAV/VNAV DA	6606-1 5/8		560 (600-1 5/8)	NA
LNAV MDA	6880-1 834 (900-1)	6880-1 1/4 834 (900-1 1/4)	6880-2 1/2 834 (900-2 1/2)	NA
CIRCLING	6880-1 1/4	824 (900-1 1/4)	7080-3 1024 (1100-3)	NA

MIRL Rwy 9-27 **0**

SW-1, 14 MAY 2026 to 11 JUN 2026

SW-1, 14 MAY 2026 to 11 JUN 2026