

APP CRS	Rwy Ldg	<b>5510</b>
<b>175°</b>	TDZE	<b>4041</b>
	Apt Elev	<b>4044</b>

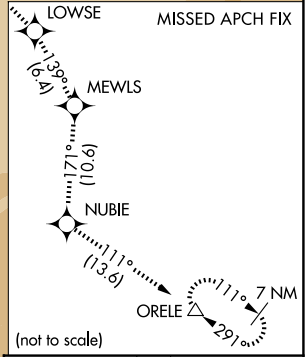
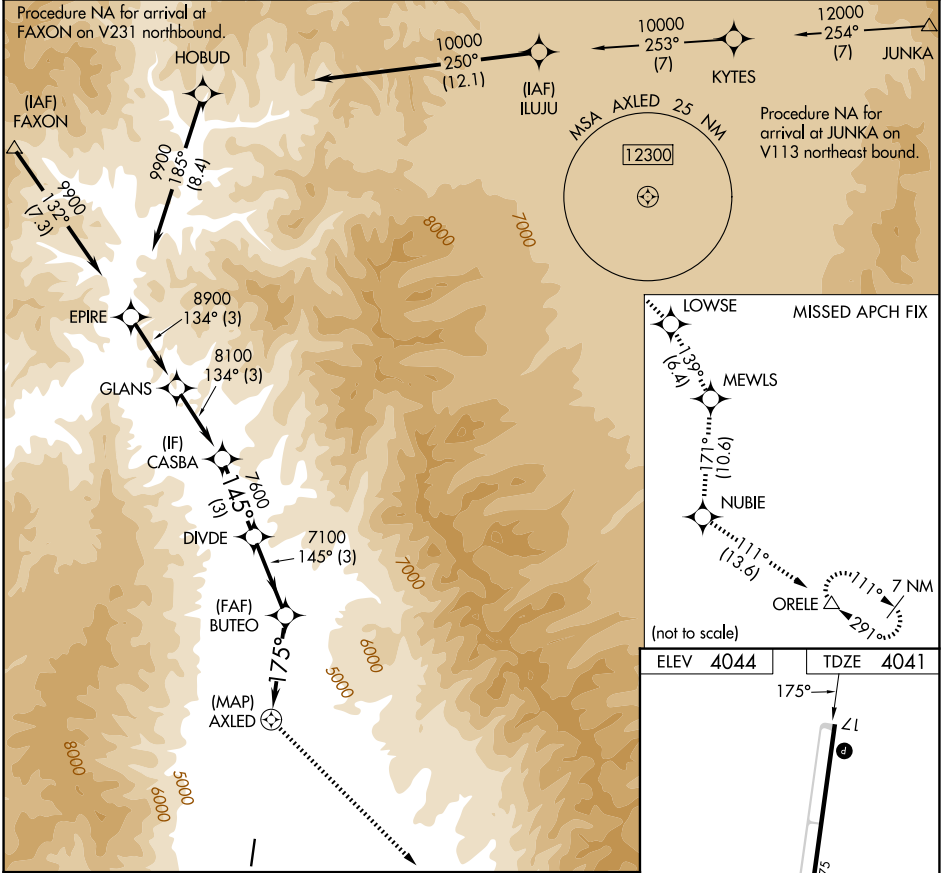
# RNAV (GPS) RWY 17

LEMHI COUNTY (SMN)

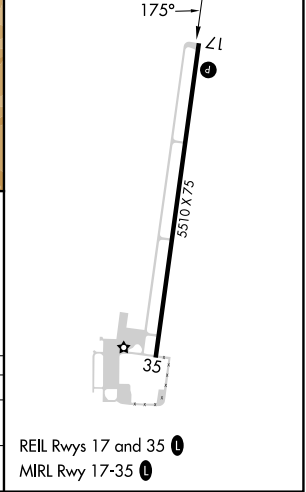
**NA**  
**-12°C**  
 DME/DME RNP-0.3 NA. Night landing: Rwy 35 NA.  
 Circling NA for Cats B and C east of Rwy 17-35.  
 Helicopter visibility reduction below 3/4 SM NA.

**MISSED APPROACH:** Climb to 13600 direct LOWSE and track 139° to MEWLS and track 171° to NUBIE and track 111° to ORELE and hold, continue climb-in-hold to 13600.

AWOS-3PT <b>135.075</b>	SALT LAKE CENTER <b>132.4 338.3</b>	UNICOM <b>122.8 (CTAF)</b>
----------------------------	--	-------------------------------



ELEV 4044	TDZE 4041
-----------	-----------



13600	LOWSE	MEWLS	BUTEO		DIVDE	CASBA
↑	✦	✦	✦		✦	✦
		tr 139°				
			AXLED	TCH 55		
			175°	3.50°	145°	
			7100	7600	8100	
			4.3 NM	3.8 NM	3 NM	3 NM
CATEGORY	A		B		C	D
RNAV MDA	5740-5		1699 (1700-5)		NA	
CIRCLING	5740-5		1696 (1700-5)		6180-5 2136 (2200-5)	NA

NW-1, 14 MAY 2026 to 11 JUN 2026

NW-1, 14 MAY 2026 to 11 JUN 2026