

APP CRS <b>009°</b>	Rwy Ldg TDZE Apt Elev	<b>N/A</b> <b>N/A</b> <b>4044</b>
------------------------	-----------------------------	---

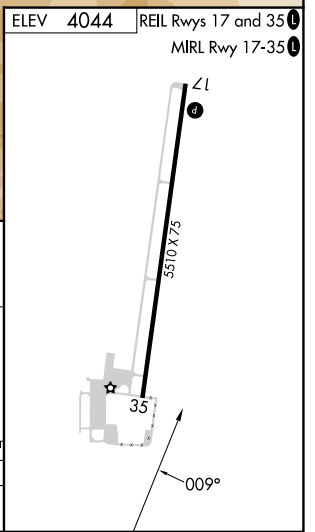
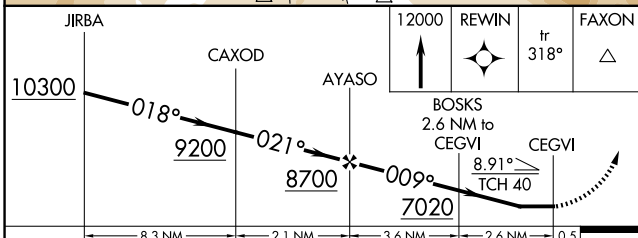
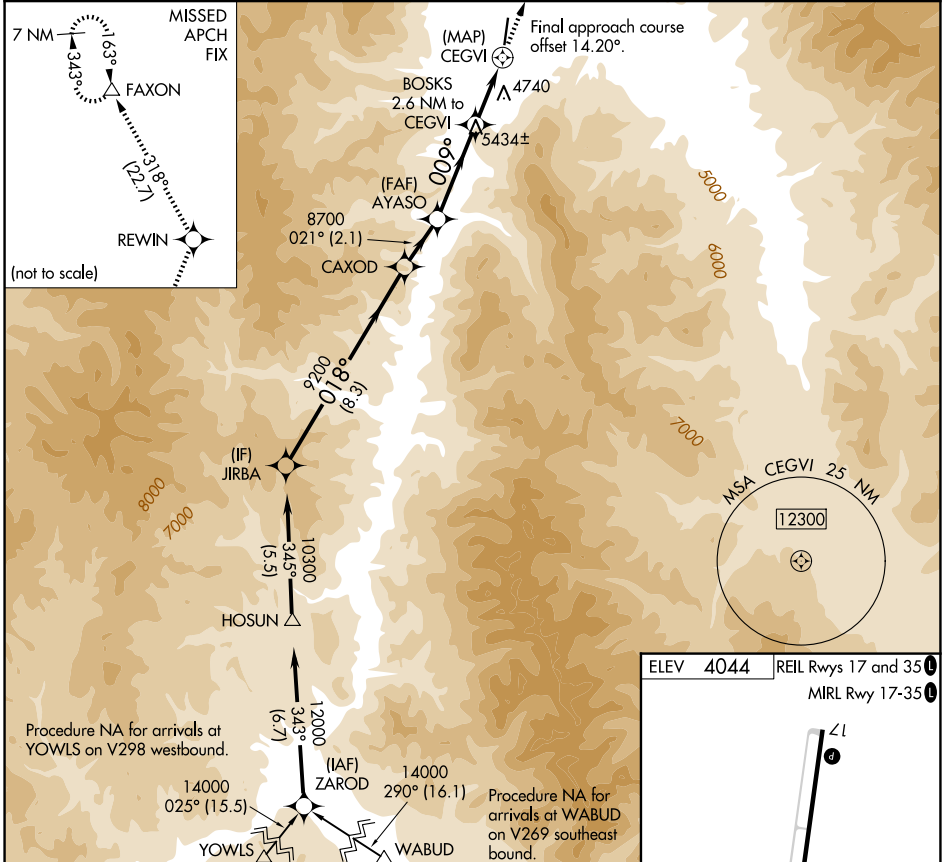
# RNAV (GPS)-D

LEMHI COUNTY (SMN)

**NA** Circling Rwy 35 NA at night.  
**NA** DME/DME RNP-0.3 NA.  
**-12°C** Circling NA for Cat C east of Rwy 17-35.

**MISSED APPROACH:** Climb to 12000 direct REWIN and on track 318° to FAXON and hold, continue climb-in-hold to 12000.

AWOS-3PT <b>135.075</b>	SALT LAKE CENTER <b>132.4 338.3</b>	UNICOM <b>122.8(CTAF) 0</b>
----------------------------	--	--------------------------------



CATEGORY	A	B	C	D
CIRCLING	6000-1¼ 1956 (2000-1¼)	6000-1½ 1956 (2000-1½)	6220-3 2176 (2200-3)	NA

NW-1, 14 MAY 2026 to 11 JUN 2026

NW-1, 14 MAY 2026 to 11 JUN 2026