

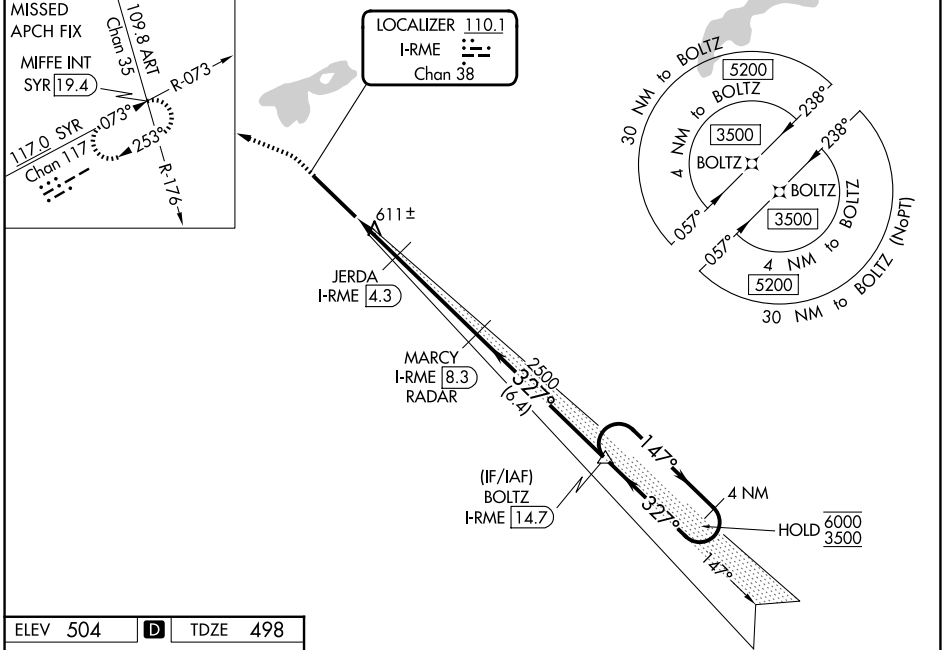
LOC/DME I-RME 110.1 Chan 38	APP CRS 327°	Rwy Ldg 11820 TDZE 498 Apt Elev 504
---	------------------------	--

ILS or LOC RWY 33

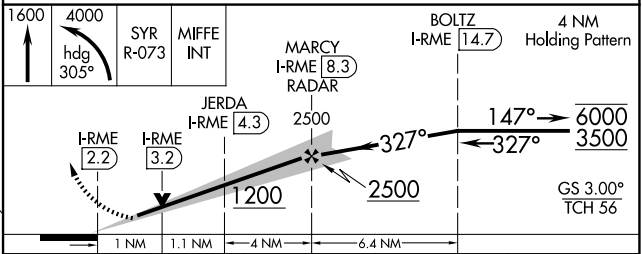
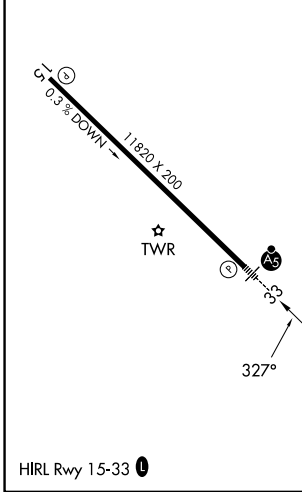
GRIFFISS INTL (RME)

RNP APCH - GPS.	MALSR	MISSED APPROACH: Climb to 1600 then climbing left turn to 4000 on heading 305° and on SYR VORTAC R-073 to MIFFE INT/SYR 19.4 DME and hold.
<p>▼ Circling NA southwest of Rwy 15-33. ▲ Rwy 33 helicopter visibility reduction below ¼ SM NA. Inop table does not apply.</p>		

ATIS 118.7	SYRACUSE APP CON 127.425 290.45	GRIFFISS TOWER * 118.1 (CTAF) 0 291.7	GND CON 121.9	UNICOM 122.95
----------------------	---	---	-------------------------	-------------------------



ELEV 504	D	TDZE 498
-----------------	----------	-----------------



CATEGORY	A	B	C	D
S-ILS 33	784-7/8 286 (300-7/8)			
S-LOC 33	880-1	382 (400-1)	880-1 1/8	382 (400-1 1/8)
CIRCLING	1120-1 616 (700-1)	1220-1 716 (800-1)	1380-2 1/2 876 (900-2 1/2)	1640-3 1136 (1200-3)

NE-2, 14 MAY 2026 to 11 JUN 2026

NE-2, 14 MAY 2026 to 11 JUN 2026