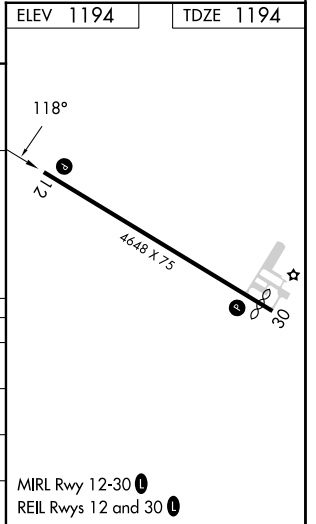
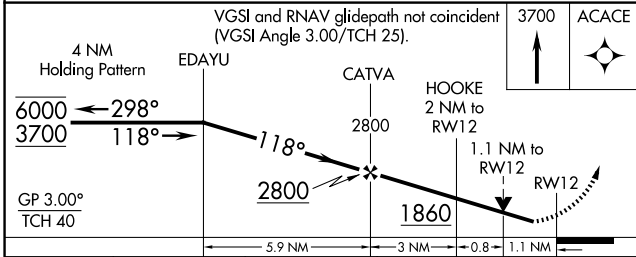
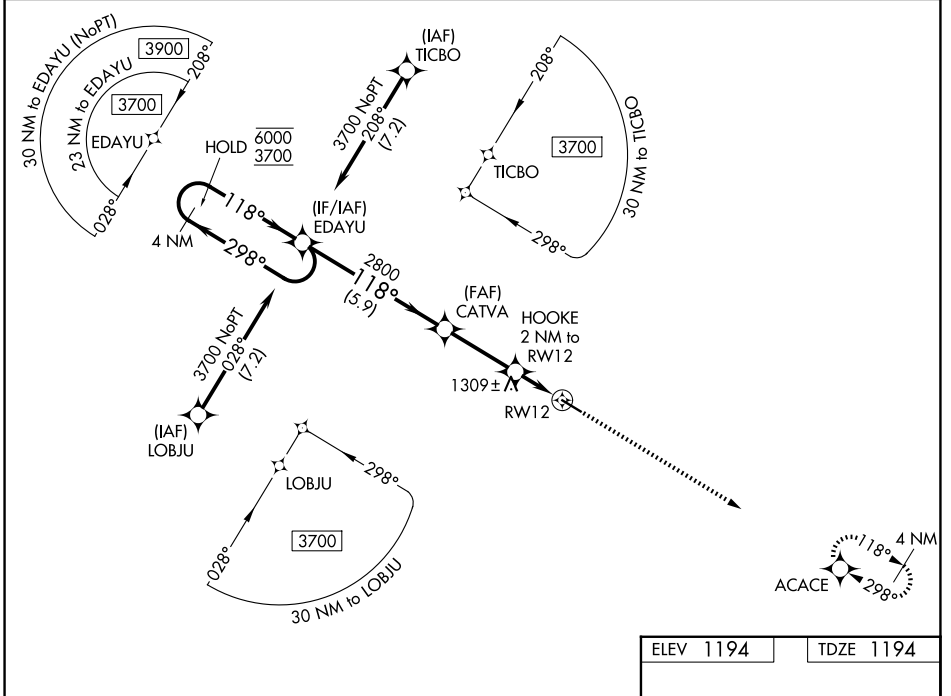


| | | | |
|--|------------------------|-----------------------------|---|
| WAAS CH 56418 W12A | APP CRS 118° | Rwy Ldg TDZE Apt Elev | 4648 1194 1194 |
|--|------------------------|-----------------------------|---|

RNAV (GPS) RWY 12

MYERS FLD (CNB)

| | | |
|--|--|---|
| RNP APCH - GPS. | | MISSED APPROACH: Climb to 3700 direct ACACE and hold. |
| <p>▽ Rwy 12 helicopter visibility reduction below 3/4 SM NA. For uncompensated Baro-VNAV systems, LNAV/VNAV NA below -17°C or above 54°C.</p> <p>▲</p> | | |
| AWOS-3 118.575 | MINNEAPOLIS CENTER 128.5 306.2 | CTAF 122.9 0 |



| CATEGORY | A | B | C | D |
|--------------|----------------------------|----------------------------|----------------------------|---|
| LPV DA | 1444-1 250 (300-1) | | | |
| LNAV/VNAV DA | 1598-1 1/8 404 (500-1 1/8) | | | |
| LNAV MDA | 1580-1 386 (400-1) | 1580-1 1/8 386 (400-1 1/8) | | |
| CIRCLING | 1700-1 506 (600-1) | 1800-1 3/4 606 (700-1 3/4) | 1960-2 1/2 766 (800-2 1/2) | |

MIRL Rwy 12-30 0
REIL Rwy 12 and 30 0

NC-1, 14 MAY 2026 to 11 JUN 2026

NC-1, 14 MAY 2026 to 11 JUN 2026