

APP CRS	Rwy Ldg	4195
013°	TDZE	2941
	Apt Elev	2941

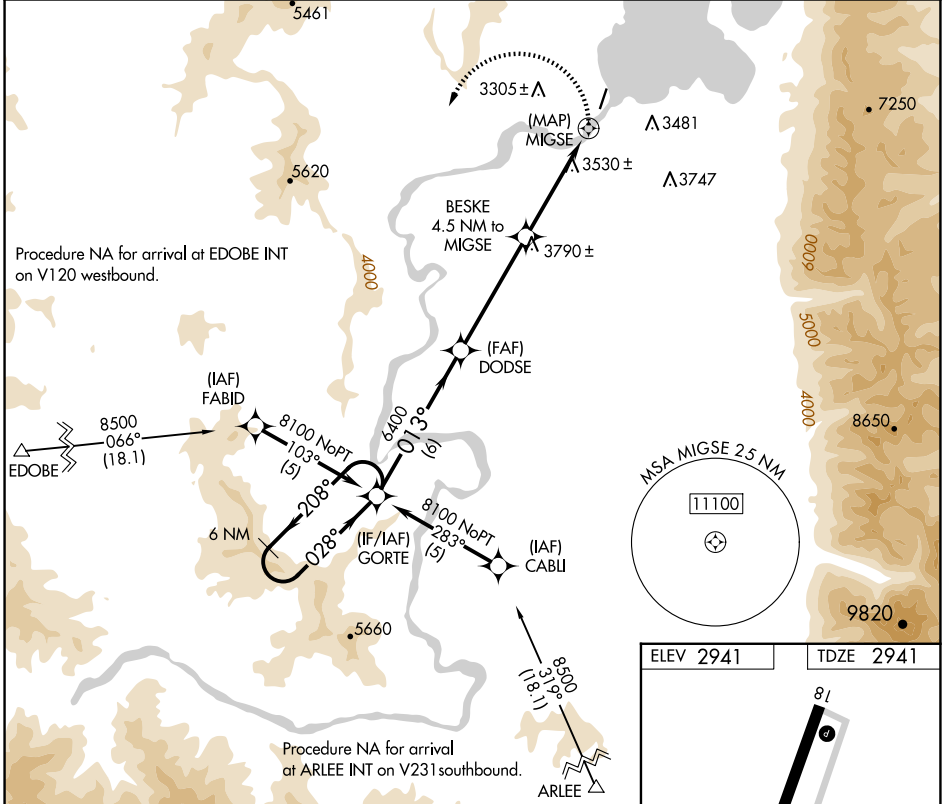
RNAV (GPS) RWY 36

POLSON (8S1)

NA Procedure NA at night. DME/DME RNP-0.3 NA. Use Glacier Park Inlt altimeter setting. Helicopter visibility reduction below 1 SM NA.

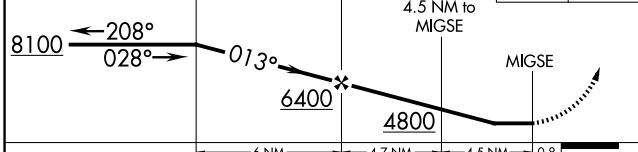
MISSED APPROACH: Climbing left turn to 9000 direct GORTE WP and hold.

GPI ASOS 132.625	SALT LAKE CENTER 127.075 244.875	UNICOM 122.8 (CTAF) 0
----------------------------	--	---------------------------------

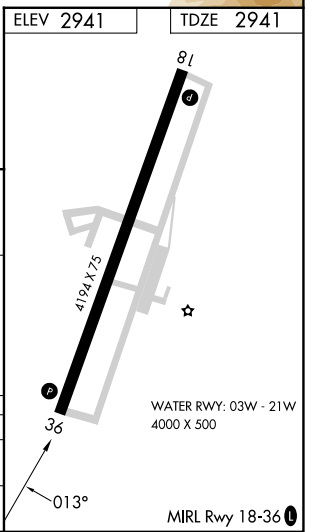


Visual Segment - Obstacles.

9000	GORTE
------	-------



CATEGORY	A	B	C	D
LNAV	4340-1¼ 1399 (1400-1¼)	4340-1½ 1399 (1400-1½)	NA	NA
CIRCLING	4340-1¼ 1399 (1400-1¼)	4340-1½ 1399 (1400-1½)	NA	NA



NW-1, 14 MAY 2026 to 11 JUN 2026

NW-1, 14 MAY 2026 to 11 JUN 2026