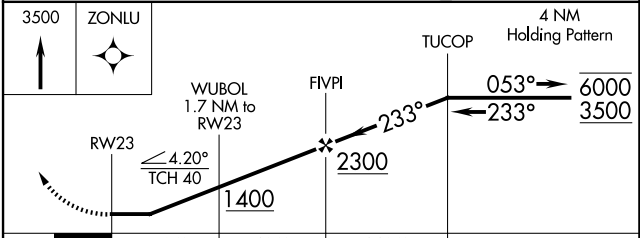
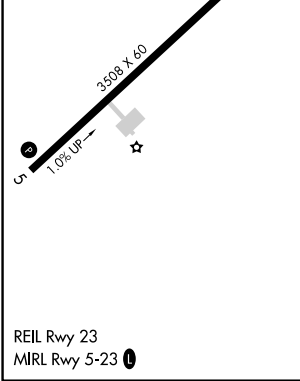
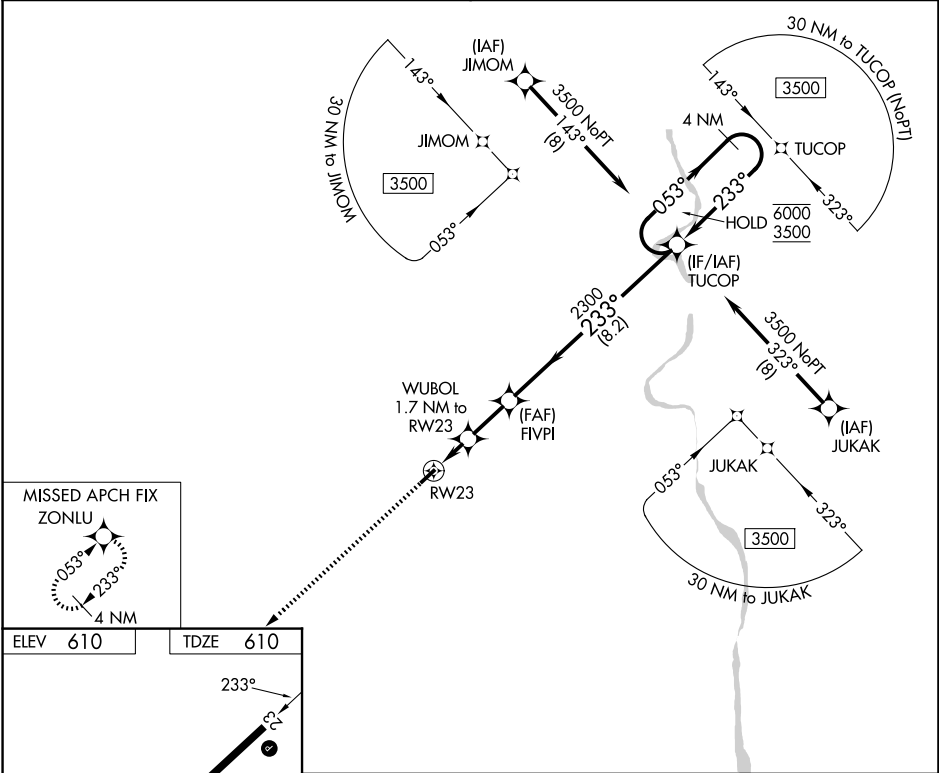


WAAS CH 77535 W23A	APP CRS 233°	Rwy Ldg TDZE Apt Elev	3508 610 610
--	------------------------	-----------------------------	---

RNAV (GPS) RWY 23

UNION COUNTY, TROY SHELTON FLD (35A)

RNP APCH - GPS.		MISSED APPROACH: Climb to 3500 direct ZONLU and hold, continue climb-in-hold to 3500.
AWOS-3PT 119.45	GREER APP CON ★ 119.4 350.2	UNICOM 122.7 (CTAF) 0



CATEGORY	A	B	C	D
LP MDA	1080-1	470 (500-1)		NA
LNAV MDA	1140-1	530 (600-1)		NA
CIRCLING	1180-1	570 (600-1)		NA

SE-2, 14 MAY 2026 to 11 JUN 2026

SE-2, 14 MAY 2026 to 11 JUN 2026