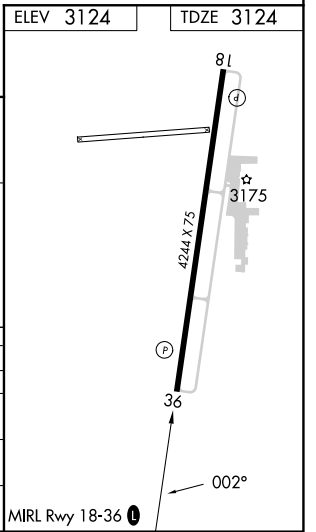
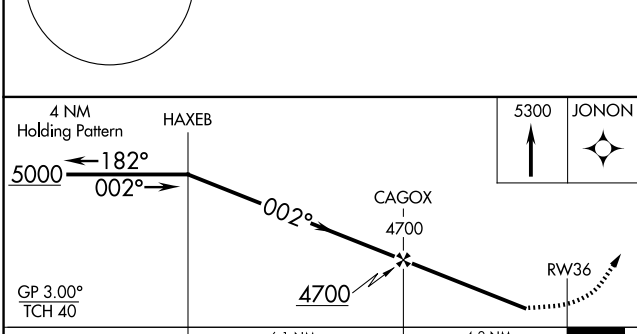
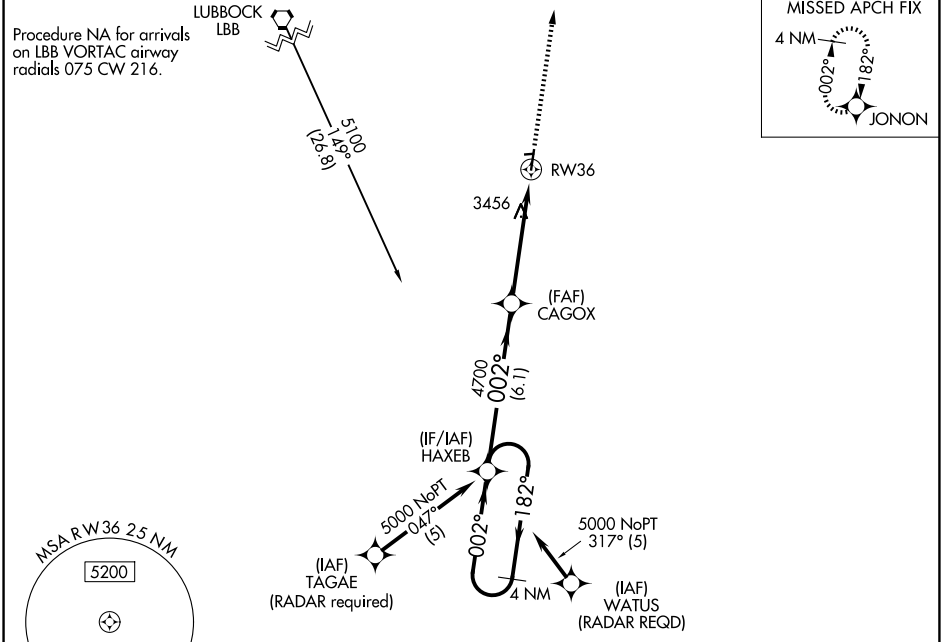


WAAS CH <b>86939</b> <b>W36A</b>	APP CRS <b>002°</b>	Rwy Ldg <b>4244</b> TDZE <b>3124</b> Apt Elev <b>3124</b>
--	------------------------	---

# RNAV (GPS) RWY 36

CITY OF SLATON/LARRY T NEAL MEML (F49)

<b>V</b> Baro-VNAV NA. DME/DME RNP-0.3 NA. Helicopter visibility reduction	MISSED APPROACH: Climb to 5300 direct JONON and hold.	
<b>A</b> NA below 3/4 SM NA.		
LBB ASOS <b>125.3 270.275</b>	LUBBOCK APP CON <b>119.2 351.8</b>	UNICOM <b>123.0 (CTAF)</b>



CATEGORY	A	B	C	D
LPV DA		3883-3	759 (800-3)	
LNAV/VNAV DA		3849-3	725 (800-3)	
LNAV MDA	3760-1	636 (700-1)	3760-1 3/4	636 (700-1 3/4)
CIRCLING	3760-1 636 (700-1)	3820-1 696 (700-1)	3820-2 696 (700-2)	3820-2 1/4 696 (700-2 1/4)

SC-2, 14 MAY 2026 to 11 JUN 2026

SC-2, 14 MAY 2026 to 11 JUN 2026