

APP CRS	Rwy Ldg	2729
188°	TDZE	196
	Apt Elev	196

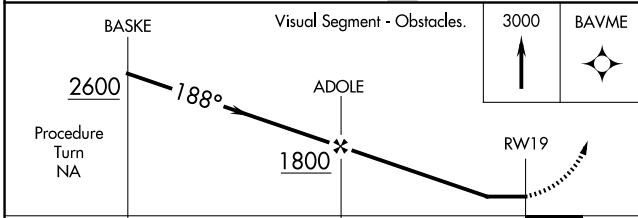
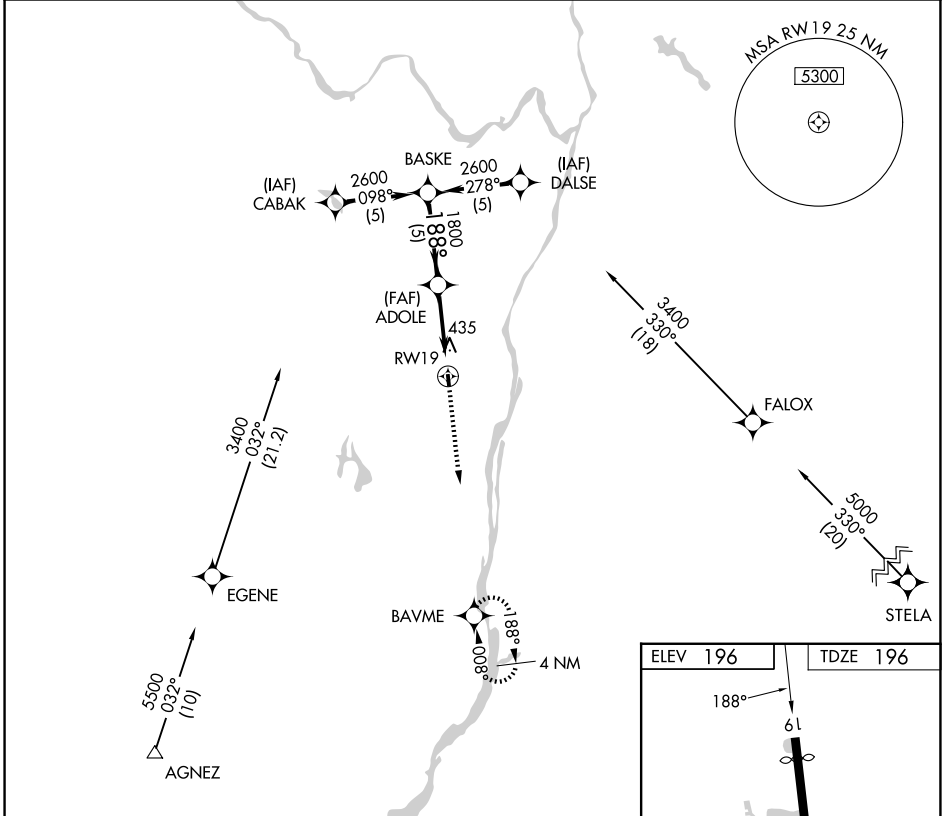
RNAV (GPS) RWY 19

SOUTH ALBANY (4B0)

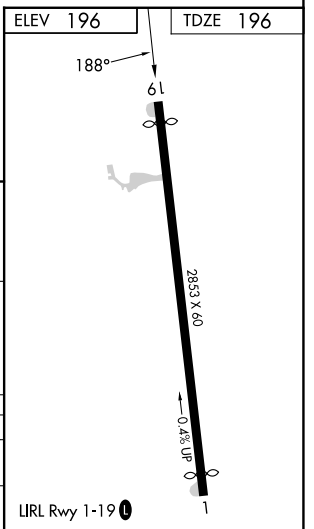
RNP APCH. MISSED APPROACH: Climb to 3000 direct BAVME WP and hold.

▼ Use Albany Intl altimeter setting. Procedure NA at night.
 ▲ NA Rwy 19 helicopter visibility reduction below 1 SM NA.

ALBANY APP CON 118.05 263.075	CTAF 122.9 0
---	------------------------



CATEGORY	A	B	C	D
LNAV MDA	740-1	544 (600-1)		NA
CIRCLING	840-1 644 (700-1)	1180-1½ 984 (1000-1½)		NA



NE-2, 14 MAY 2026 to 11 JUN 2026

NE-2, 14 MAY 2026 to 11 JUN 2026