

WAAS CH <b>58134</b> <b>W01A</b>	APP CRS <b>011°</b>	Rwy Ldg <b>4412</b> TDZE <b>221</b> Apt Elev <b>221</b>
--	------------------------	---

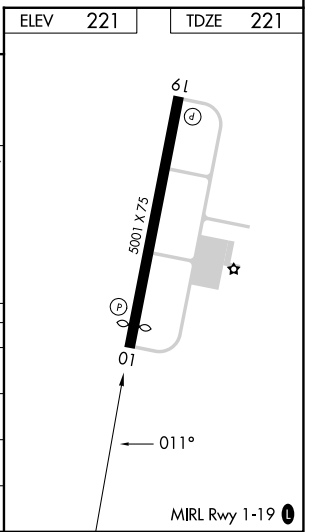
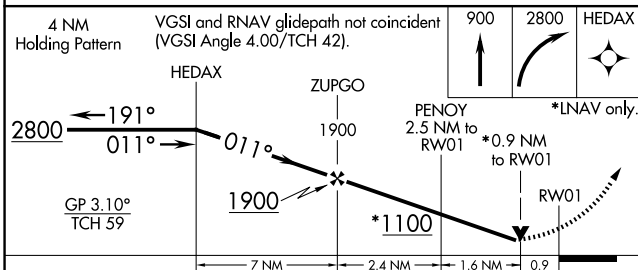
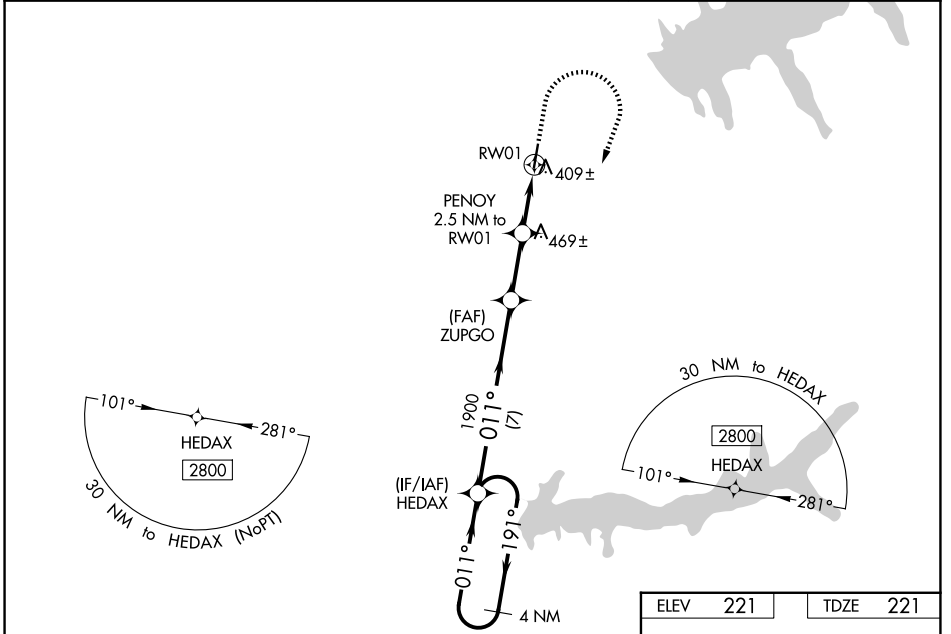
# RNAV (GPS) RWY 1

PANOLA COUNTY (PMU)

**⚠** For uncompensated Baro-VNAV systems, LNAV/VNAV NA below -15°C (5°F) or above 46°C (115°F).  
**⚠** DME/DME RNP-0.3 NA. Baro-VNAV and VDP NA when using University-Oxford altimeter setting.  
**⚠** When local altimeter setting not received, use Oxford altimeter setting and increase LPV DA to 688, LNAV/VNAV DA to 729 and MDA 80 feet, increase LPV and LNAV/VNAV all Cats visibility ¼ mile, LNAV Cats C, D visibility ½ mile, and Circling Cats B, C visibility ¼ mile.  
 Helicopter visibility reduction below ¾ SM NA.

**MISSED APPROACH:**  
 Climb to 900 then climbing right turn to 2800 direct HEDAX and hold.

AWOS-3PT <b>118.225</b>	MEMPHIS CENTER <b>128.5 279.55</b>	UNICOM <b>122.8 (CTAF) 0</b>
----------------------------	---------------------------------------	---------------------------------



CATEGORY	A	B	C	D
LPV DA	614-1¼		393 (400-1¼)	
LNAV/VNAV DA	661-1⅜		440 (500-1⅜)	
LNAV MDA	660-1	439 (500-1)		660-1¼ 439 (500-1¼)
CIRCLING	740-1 519 (600-1)	1000-1 779 (800-1)	1000-2¼ 779 (800-2¼)	1120-3 899 (900-3)

SC-4, 14 MAY 2026 to 11 JUN 2026

SC-4, 14 MAY 2026 to 11 JUN 2026