

| | | |
|---------------------------------|------------------------|---|
| WAAS CH 72834 W19A | APP CRS 191° | Rwy Ldg 5001 TDZE 221 Apt Elev 221 |
|---------------------------------|------------------------|---|

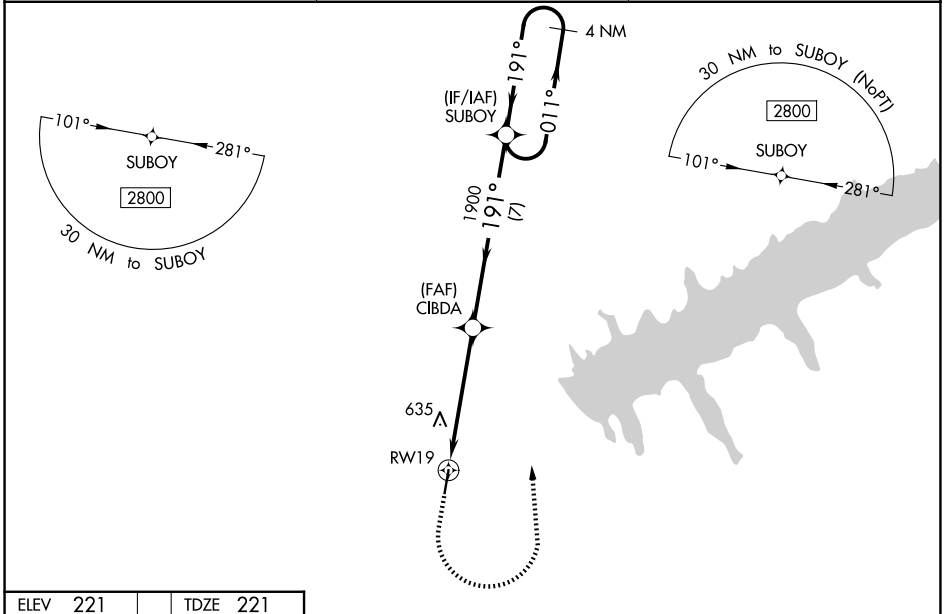
RNAV (GPS) RWY 19

PANOLA COUNTY (PMU)

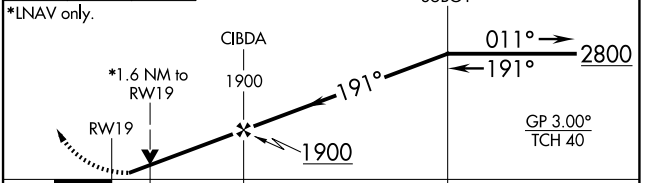
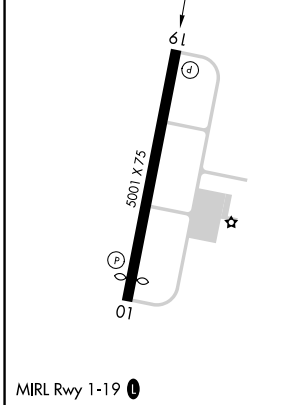
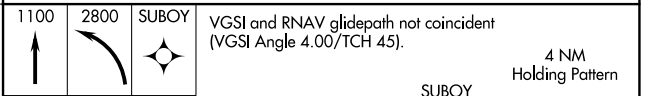
▼ For uncompensated Baro-VNAV systems, LNAV/VNAV NA below -15°C (5°F) or above 54°C (130°F).
▲ NA DME/DME RNP-0.3 NA. Baro-VNAV and VDP NA when using Oxford altimeter setting.
 When local altimeter setting not received, use Oxford altimeter setting and increase LPV DA to 571, LNAV/VNAV DA to 1116 and all MDA 80 feet, increase LPV all Cats visibility $\frac{3}{8}$ mile, LNAV/VNAV all Cats visibility $\frac{1}{2}$ mile, LNAV Cat B visibility $\frac{1}{4}$ mile, LNAV Cats C, D visibility $\frac{1}{2}$ mile, and Circling Cats B, C visibility $\frac{1}{4}$ mile. Rwy 19 helicopter visibility reduction below $\frac{3}{4}$ SM NA.

MISSED APPROACH:
 Climb to 1100 then climbing left turn to 2800 direct SUBOY and hold.

| | | |
|----------------------------|---------------------------------------|---------------------------------|
| AWOS-3PT 118.225 | MEMPHIS CENTER 128.5 279.55 | UNICOM 122.8 (CTAF) 0 |
|----------------------------|---------------------------------------|---------------------------------|



| | |
|-----------------|-----------------|
| ELEV 221 | TDZE 221 |
|-----------------|-----------------|



| CATEGORY | A | B | C | D |
|--------------|----------------------|-----------------------|--|-----------------------|
| LPV DA | 500- $\frac{7}{8}$ | | 279 (300- $\frac{7}{8}$) | |
| LNAV/VNAV DA | 1045-3 | | 824 (900-3) | |
| LNAV MDA | 940-1 719 (800-2) | | 940-2 719 (800-2) | |
| CIRCLING | 940-1 719 (800-1) | 1000-1 779 (800-1) | 1000- $\frac{2}{4}$ 779 (800- $\frac{2}{4}$) | 1120-3 899 (900-3) |

SC-4, 14 MAY 2026 to 11 JUN 2026

SC-4, 14 MAY 2026 to 11 JUN 2026