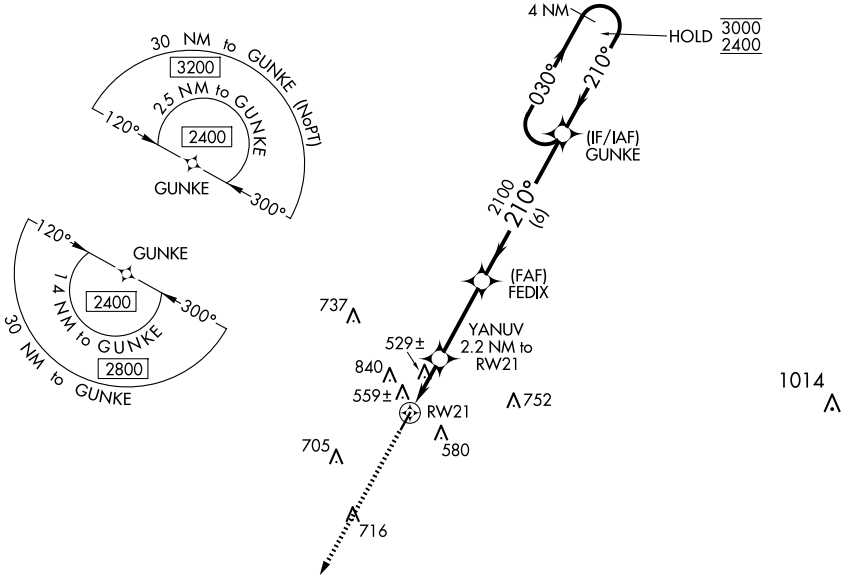


WAAS CH 53431 W21A	APP CRS 210°	Rwy Idg TDZE Apt Elev	4000 364 364
--	------------------------	-----------------------------	---

RNAV (GPS) RWY 21
WINONA-MONTGOMERY COUNTY (5A6)

RNP APCH - GPS.	<p>▼ Rwy 21 helicopter visibility reduction below 1 SM NA. ▲ NA Procedure NA at night. Circling NA northwest of Rwy 3-21. When local altimeter setting not received, use GNF altimeter setting.</p>	MISSED APPROACH: Climb to 2500 direct GUCEY and hold.
-----------------	---	---

AWOS-3PT 120.175	MEMPHIS CENTER 128.5 279.55	CTAF 122.9 0
----------------------------	---------------------------------------	------------------------



SC-4, 14 MAY 2026 to 11 JUN 2026

SC-4, 14 MAY 2026 to 11 JUN 2026

ELEV 364	TDZE 364
-----------------	-----------------

MIRL Rwy 3-21 0

GUCEY 2500

YANUV 2.2 NM to RW21

FEDIX 2100

GUNKE 4 NM Holding Pattern

CATEGORY	A	B	C	D
LP MDA	860-1	496 (500-1)	860-1 ³ / ₈ 496 (500-1 ³ / ₈)	NA
LNAV MDA	900-1	536 (600-1)	900-1 ¹ / ₂ 536 (600-1 ¹ / ₂)	NA
CIRCLING	960-1	596 (600-1)	1100-2 736 (800-2)	NA