

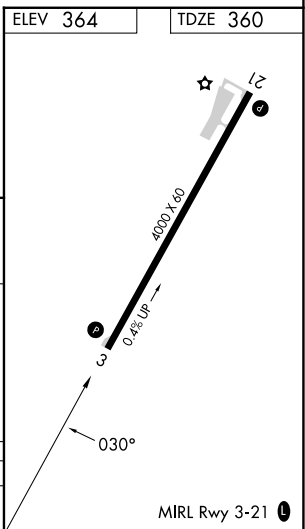
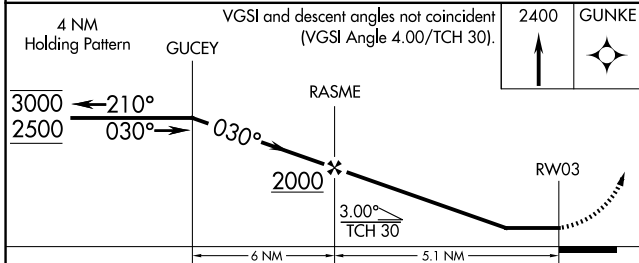
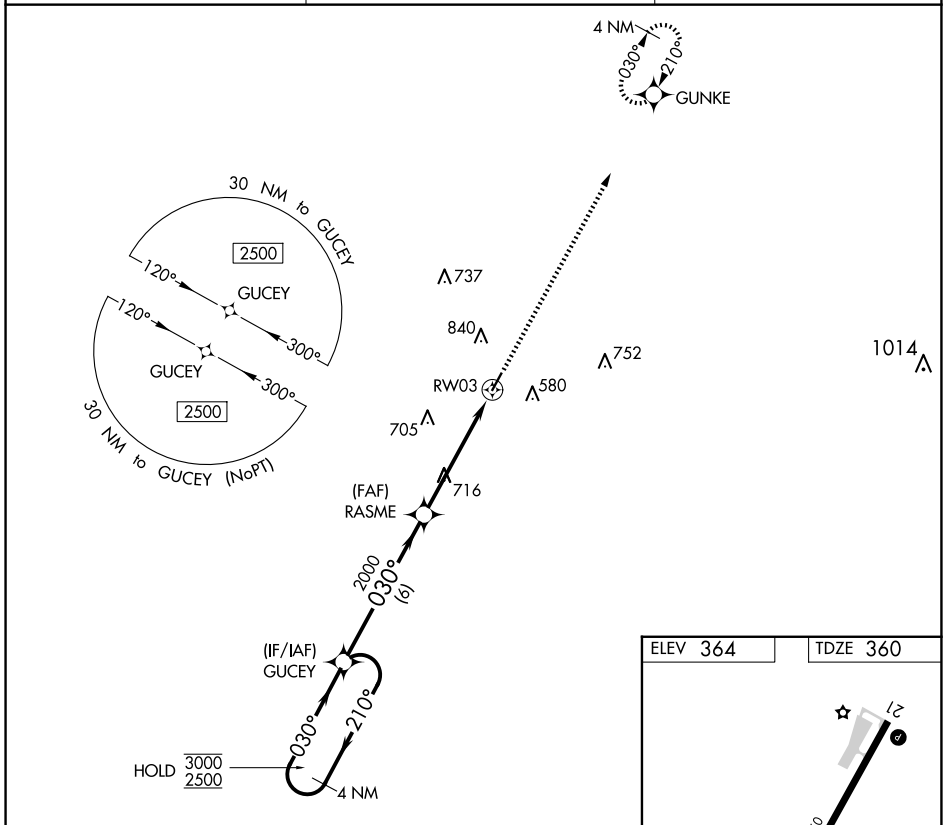
APP CRS	Rwy Idg	4000
030°	TDZE	360
	Apt Elev	364

RNAV (GPS) RWY 3

WINONA-MONTGOMERY COUNTY (5A6)

RNP APCH - GPS.	Procedure NA at night. Rwy 3 helicopter visibility reduction below 1 SM NA. When local altimeter setting not received, use GNF altimeter setting.	MISSED APPROACH: Climb to 2400 direct GUNKE and hold.
-----------------	--	---

AWOS-3PT 120.175	MEMPHIS CENTER 128.5 279.55	CTAF 122.9
----------------------------	---------------------------------------	----------------------



CATEGORY	A	B	C	D
LNAV MDA	1040-1	680 (700-1)	1040-2 680 (700-2)	NA

SC-4, 14 MAY 2026 to 11 JUN 2026

SC-4, 14 MAY 2026 to 11 JUN 2026