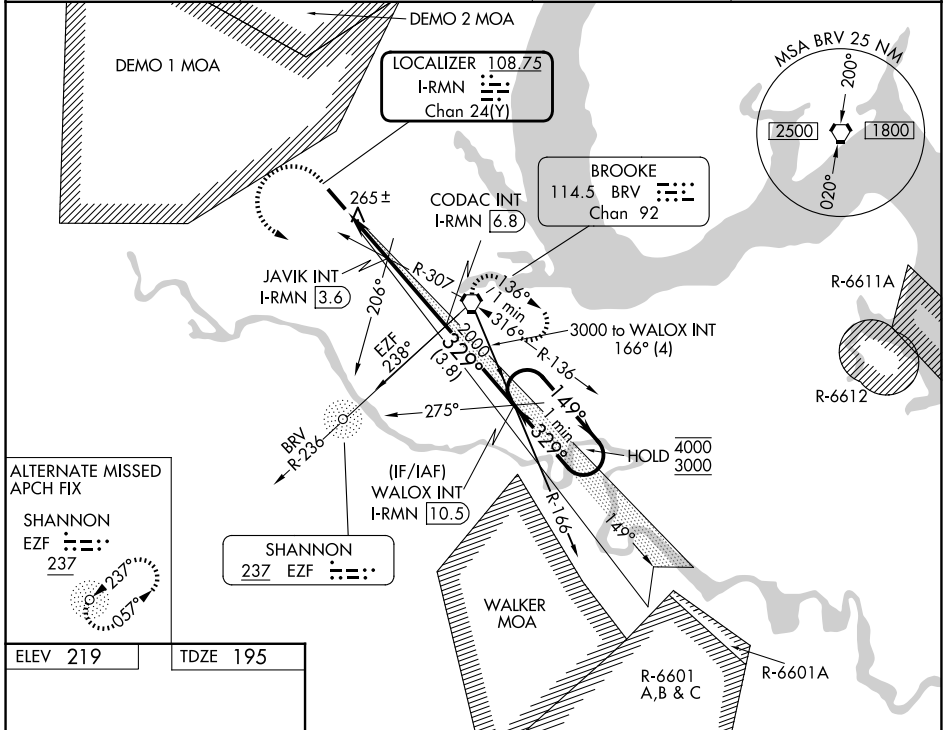


LOC/DME I-RMN 108.75 Chan 24 (Y)	APP CRS 329°	Rwy Ldg TDZE 195 Apt Elev 219	6000
--	------------------------	---	-------------

ILS or LOC RWY 33
WASHINGTON EXEC/STAFFORD RGNL (R.MN)

ADF or DME required.	MALS 	MISSED APPROACH: Climb to 700 then climbing left turn to 2100 direct BRV VORTAC and hold, continue climb-in-hold to 2100.
 Circling Rwy 15 NA at night. Inop table does not apply		

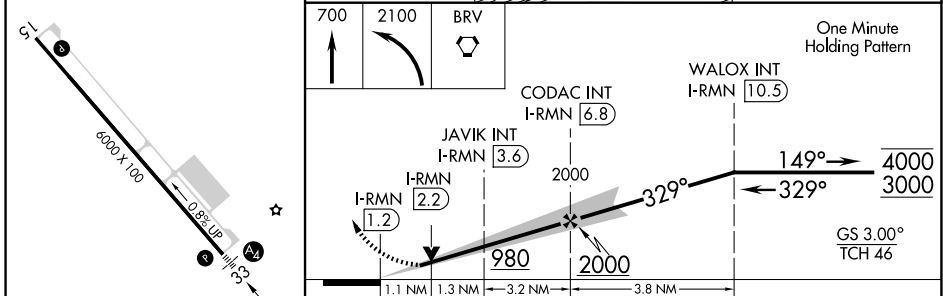
AWOS-3 126.325	QUANTICO APP CON* 127.05 290.375	GCO 135.075	UNICOM 122.725 (CTAF)
--------------------------	--	-----------------------	---------------------------------



ALTERNATE MISSED APCH FIX

SHANNON
EFZ
237

ELEV 219	TDZE 195
----------	----------



REIL Rwy 15	HIRL Rwy 15-33	FAF to MAP 5.6 NM					
		Knots	60	90	120	150	180
		Min:Sec	5:36	3:44	2:48	2:14	1:52
CATEGORY	A	B	C	D			
S-ILS 33	445- ³ / ₄			250 (300- ³ / ₄)			
S-LOC 33	560- ³ / ₄			365 (400- ³ / ₄)			
CIRCLING	720-1	820-1	820-1 ³ / ₄	1040-2 ³ / ₄			
	501 (600-1)	601 (700-1)	601 (700-1 ³ / ₄)	821 (900-2 ³ / ₄)			

NE-3, 14 MAY 2026 to 11 JUN 2026

NE-3, 14 MAY 2026 to 11 JUN 2026