

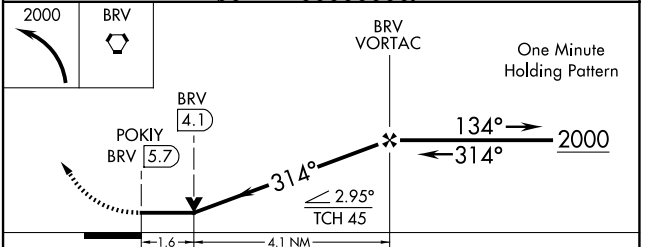
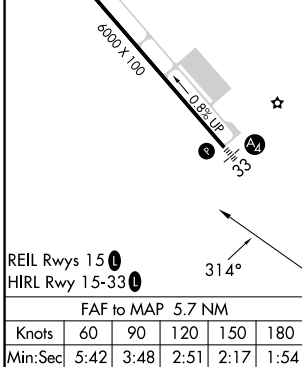
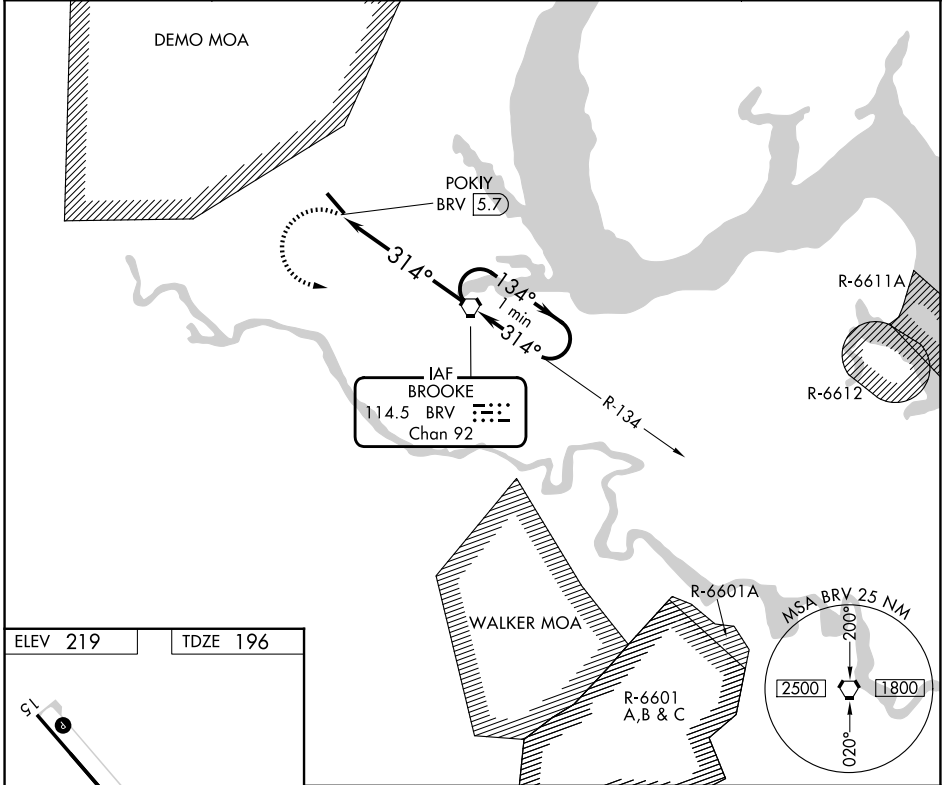
VORTAC BRV <b>114.5</b> Chan <b>92</b>	APP CRS <b>314°</b>	Rwy Ldg TDZE Apt Elev	<b>6000</b> <b>196</b> <b>219</b>
--	------------------------	-----------------------------	---

# VOR RWY 33

WASHINGTON EXEC/STAFFORD RGNL (R.MN)

<p>Inoperative table does not apply to Cat C. Circling Rwy 15 NA at night.</p>	<p>MALS</p>	<p>MISSED APPROACH: Climbing left turn to 2000 direct BRV VORTAC and hold.</p>

AWOS-3 <b>126.325</b>	QUANTICO APP CON * <b>127.05 290.375</b>	GCO <b>135.075</b>	UNICOM <b>122.725 (CTAF) 0</b>
--------------------------	---	-----------------------	-----------------------------------



CATEGORY	A	B	C	D
S-33	740-3/4 544 (600-3/4)		740-1 1/2 544 (600-1 1/2)	740-1 3/4 544 (600-1 3/4)
CIRCLING	740-1 521 (600-1)	820-1 601 (700-1)	820-1 3/4 601 (700-1 3/4)	1040-2 3/4 821 (900-2 3/4)

# VOR RWY 33

NE-3, 14 MAY 2026 to 11 JUN 2026

NE-3, 14 MAY 2026 to 11 JUN 2026