

(CABOT1.CABOT) 25275

AL-9745 (FAA)

AKIACHAK (Z13)(PFZK)
AKIACHAK, ALASKA

CABOT ONE DEPARTURE (OBSTACLE) (RNAV)

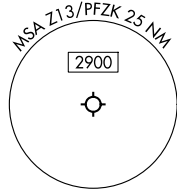
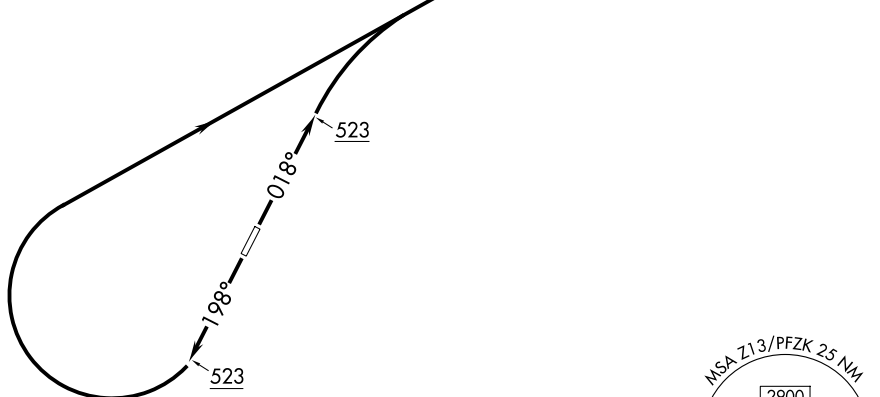
ANCHORAGE CENTER
125.2 372.0

RNAV 1 - GPS.

CABOT
△

TAKEOFF MINIMUMS

Rwys 2, 20: Standard.



TAKEOFF OBSTACLE NOTES

- Rwy 2: Trees 20' from DER, 327' right of centerline, 30' AGL/60' MSL.
- Trees 28' from DER, 338' left of centerline, 30' AGL/50' MSL.
- Trees beginning 86' from DER, 53' right of centerline, up to 30' AGL/63' MSL.
- Trees 94' from DER, 206' left of centerline, 30' AGL/53' MSL.
- Trees beginning 160' from DER, 73' left of centerline, up to 30' AGL/57' MSL.
- Rwy 20: Trees beginning 2' from DER, 224' left of centerline, up to 30' AGL/50' MSL.
- Trees beginning 59' from DER, 309' right of centerline, up to 30' AGL/50' MSL.
- Trees beginning 200' from DER, 91' left of centerline, up to 30' AGL/57' MSL.
- Trees beginning 266' from DER, 35' right of centerline, up to 30' AGL/57' MSL.

NOTE: Chart not to scale.

DEPARTURE ROUTE DESCRIPTION

TAKEOFF RUNWAY 2: Climb on heading 018° to 523, then climbing right turn to direct CABOT, thence. . . .

TAKEOFF RUNWAY 20: Climb on heading 198° to 523, then climbing right turn to direct CABOT, thence. . . .

. . . .on filed route, expect filed altitude 10 minutes after departure.

CABOT ONE DEPARTURE (OBSTACLE) (RNAV)
(CABOT1.CABOT) 02OCT25

AKIACHAK, ALASKA
AKIACHAK (Z13)(PFZK)

AK, 14 MAY 2026 to 09 JUL 2026

AK, 14 MAY 2026 to 09 JUL 2026