

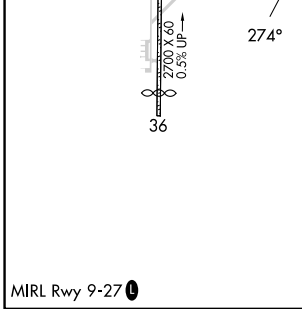
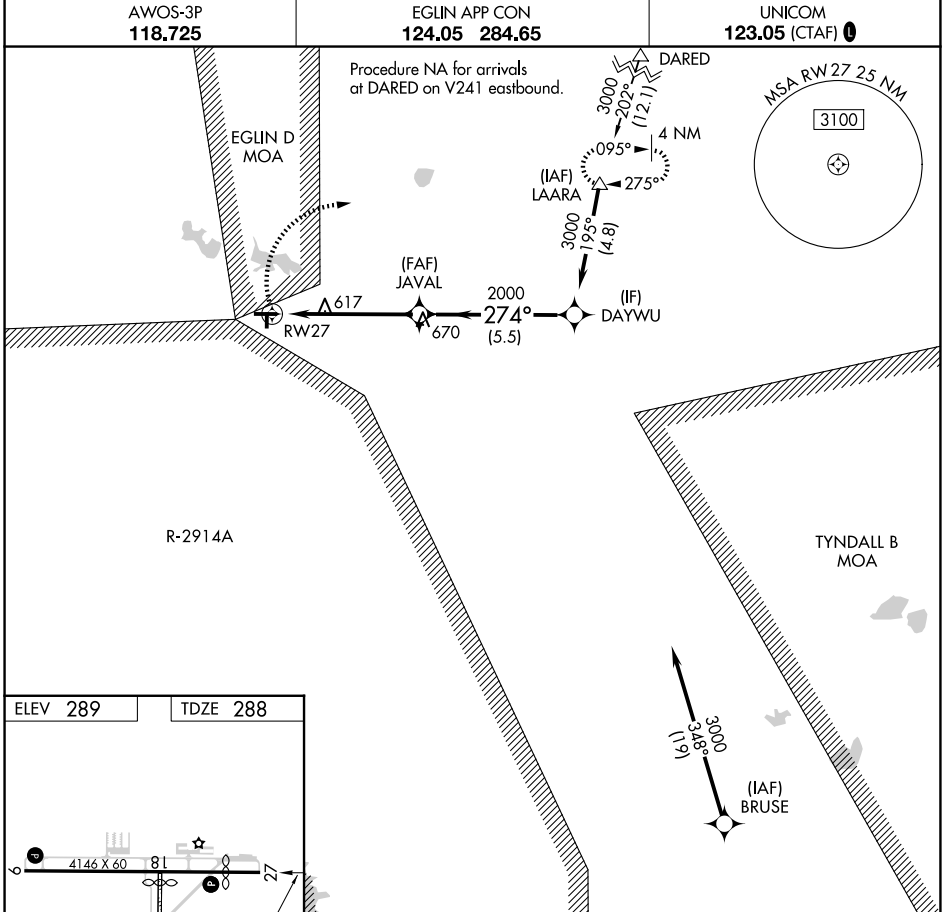
WAAS CH 97725 W27A	APP CRS 274°	Rwy Ldg TDZE Apt Elev	3541 288 289
--	------------------------	-----------------------------	---

RNAV (GPS) RWY 27

DEFUNIAK SPRINGS (54J)

RNP APCH.
 ▼ Circling NA to Rwy 18 and 36. Circling Rwy 9 NA at night.
 ▲ Rwy 27 helicopter visibility reduction below 3/4 SM NA.

MISSED APPROACH: Climbing right turn to 3000
 direct LAARA and hold.



3000	LAARA	Visual Segment - Obstacles.		DAYWU
	△	JAVAL		
		1.7 NM to RW27		3000
		RW27		
		1.7 NM	3.6 NM	5.5 NM
CATEGORY	A	B	C	D
LP MDA	880-1	592 (600-1)		NA
LNAV MDA	880-1	592 (600-1)		NA
CIRCLING	880-1	920-1		NA
	591 (600-1)	631 (700-1)		

SE-3, 14 MAY 2026 to 11 JUN 2026

SE-3, 14 MAY 2026 to 11 JUN 2026