

| | |
|------------------------|-------------------------|
| APP CRS 253° | Rwy Ldg 4498 |
| | TDZE 2241 |
| | Apt Elev 2241 |

RNAV (GPS) RWY 25

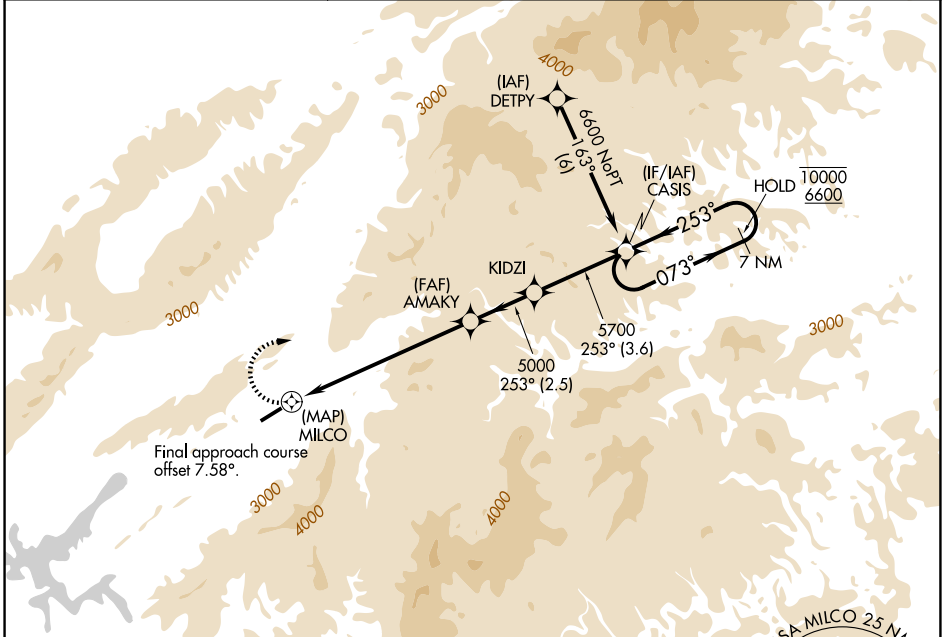
JOHNSON COUNTY (6A.4)

RNP APCH - GPS.

NA Rwy 25 helicopter visibility reduction below 1 SM NA. Circling NA for Cats C and D south of Rwy 7-25. When local altimeter setting not received, use Abingdon altimeter setting and increase all MDAs 80 feet. Procedure NA at night.

MISSED APPROACH:
Climbing right turn to 6600 direct CASIS and hold.

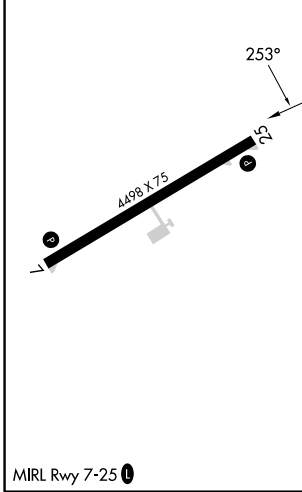
| | | |
|--------------------------|--|-------------------------------|
| AWOS-3 126.225 | TRI-CITY APP CON ★ 134.425 349.0 | UNICOM 122.7 (CTAF) |
|--------------------------|--|-------------------------------|



SE-1, 14 MAY 2026 to 11 JUN 2026

SE-1, 14 MAY 2026 to 11 JUN 2026

| | |
|-----------|-----------|
| ELEV 2241 | TDZE 2241 |
|-----------|-----------|



| | | | | |
|------------|-----------------------------|---------------------------|--------|----------------------|
| 6600 CASIS | Visual Segment - Obstacles. | | | 7 NM Holding Pattern |
| MILCO | AMAKY | KIDZI | CASIS | |
| | 5000 | 5700 | 10000 | 6600 |
| | 7 NM | 2.5 NM | 3.6 NM | |
| CATEGORY | A | B | C | D |
| LNAV MDA | 4880-1¼ 2639 (2700-1¼) | 4880-1½ 2639 (2700-1½) | 4880-3 | 2639 (2700-3) |
| CIRCLING | 4880-1¼ 2639 (2700-1¼) | 4880-1½ 2639 (2700-1½) | 4880-3 | 2639 (2700-3) |