

WAAS CH 86631 W25A	APP CRS 248°	Rwy Ldg TDZE Apt Elev	5001 643 653
--	------------------------	-----------------------------	---

RNAV (GPS) RWY 25

MARION-CRITTENDEN COUNTY JAMES C JOHNSON RGNL (GDA)

RNP APCH - GPS.

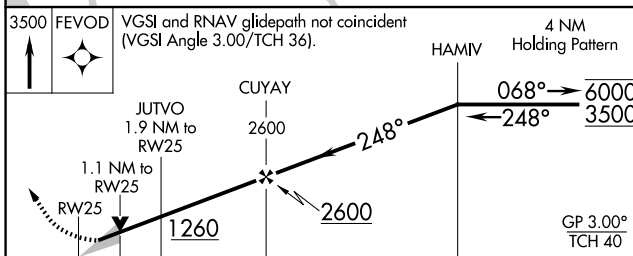
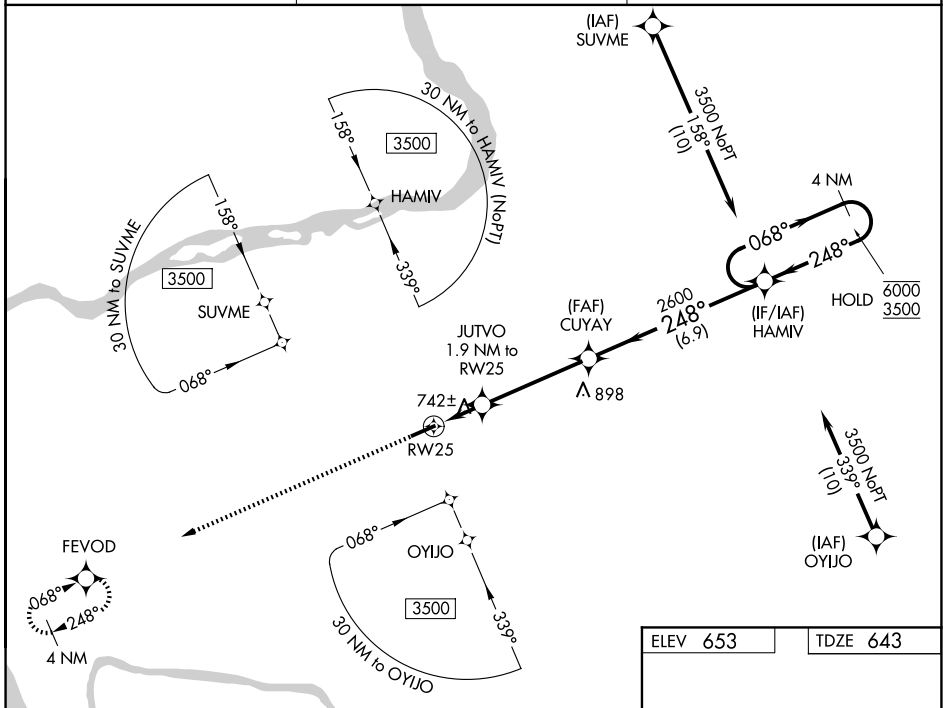
⚠ For uncompensated Baro-VNAV systems, LNAV/VNAV NA below -16°C or above 54°C.

MISSED APPROACH: Climb to 3500 direct FEVOD and hold.

AWOS-3P
118.15

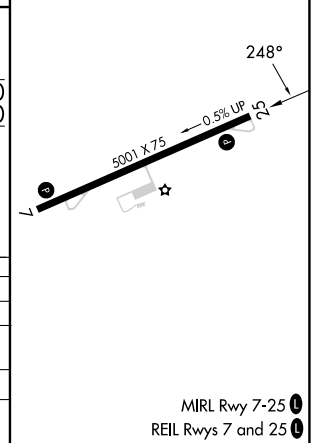
MEMPHIS CENTER
133.65 292.15

CTAF
122.9



ELEV 653	TDZE 643
----------	----------

CATEGORY	A	B	C	D
LPV DA		893-1	250 (300-1)	
LNAV/VNAV DA		945-1	302 (300-1)	
LNAV MDA		1000-1	357 (400-1)	
CIRCLING	1160-1 507 (600-1)	1360-1 707 (800-1)	1380-2 727 (800-2)	1380-2¼ 727 (800-2¼)



MIRL Rwy 7-25
REIL Rwy 7 and 25

SE-1, 14 MAY 2026 to 11 JUN 2026

SE-1, 14 MAY 2026 to 11 JUN 2026