

WAAS CH 90531 W07A	APP CRS 068°	Rwy Ldg TDZE 5001 653	Apt Elev 653
--	------------------------	---	------------------------

RNAV (GPS) RWY 7

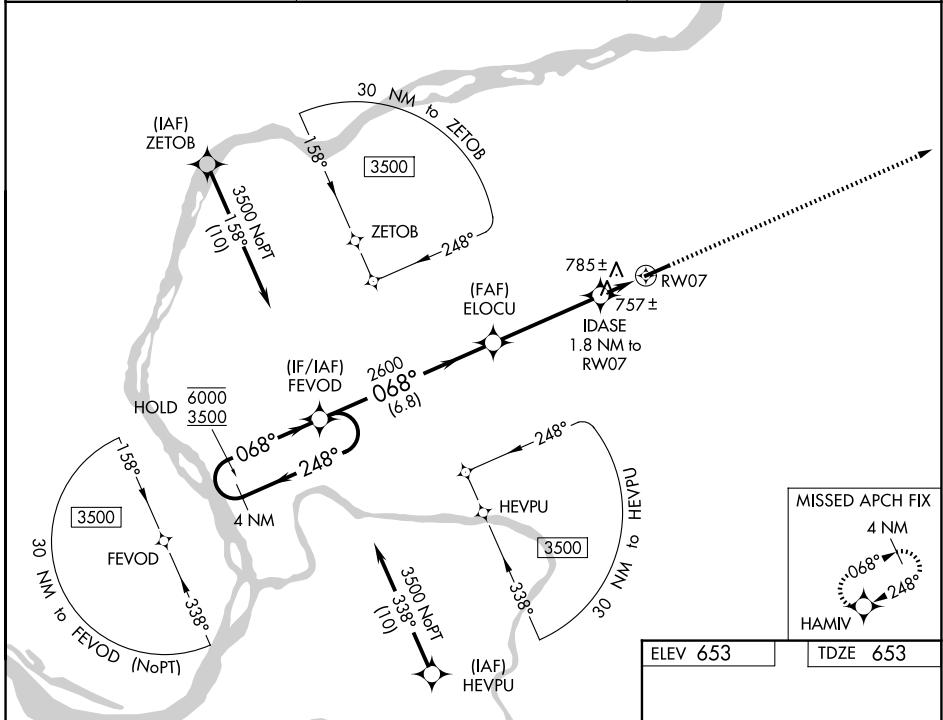
MARION-CRITTENDEN COUNTY JAMES C JOHNSON RGNL (GDA)

RNP APCH - GPS.

▼
▲ Rwy 7 helicopter visibility reduction below ¾ SM NA.

MISSED APPROACH:
Climb to 3500 direct HAMIV and hold.

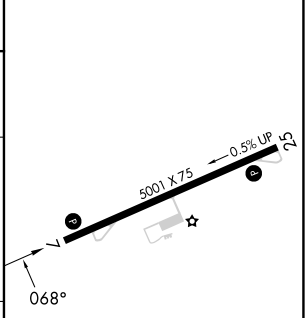
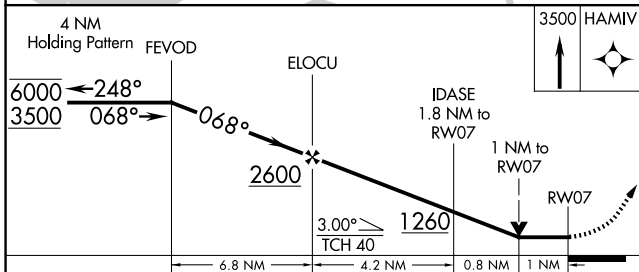
AWOS-3P 118.15	MEMPHIS CENTER 133.65 292.15	CTAF 122.9
--------------------------	--	----------------------



SE-1, 14 MAY 2026 to 11 JUN 2026

SE-1, 14 MAY 2026 to 11 JUN 2026

ELEV 653	TDZE 653
----------	----------



CATEGORY	A	B	C	D
LP MDA		1020-1	367 (400-1)	
LNAV MDA	1040-1	387 (400-1)	1040-1½	387 (400-1½)
CIRCLING	1160-1 507 (600-1)	1360-1 707 (800-1)	1380-2 727 (800-2)	1380-2¼ 727 (800-2¼)

MIRL Rwy 7-25
REIL Rwys 7 and 25

RNAV (GPS) RWY 7