

WAAS CH 45631 W23A	APP CRS 230°	Rwy Ldg TDZE Apt Elev	4099 573 584
--	------------------------	-----------------------------	---

RNAV (GPS) RWY 23

PRINCETON-CALDWELL COUNTY (2M \emptyset)

RNP APCH - GPS.

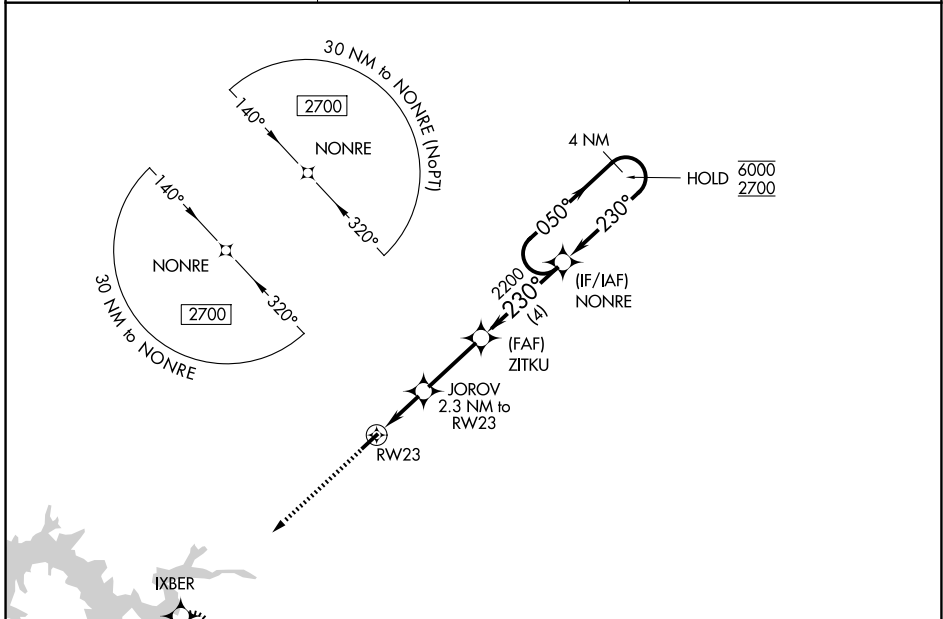
▽ Baro-VNAV NA. Use HOP altimeter setting; when not received, use 210 altimeter setting and increase LPV DA to 908 feet, increase LNAV/VNAV DA to 1224 feet, increase all MDAs 20 feet.
▲ NA

MISSED APPROACH:
Climb to 2700 direct IXBER and hold.

HOP ATIS
125.175 308.4

CAMPBELL APP CON
118.1 269.525

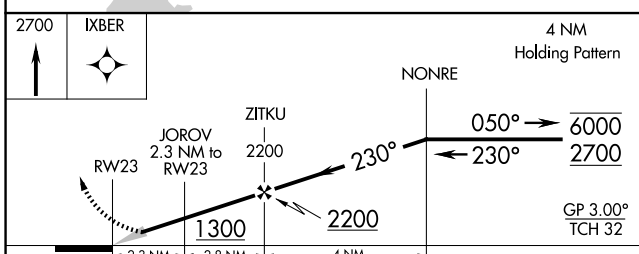
UNICOM
122.8 (CTAF) **①**



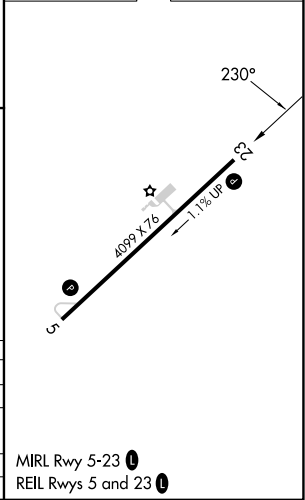
SE-1, 14 MAY 2026 to 11 JUN 2026

SE-1, 14 MAY 2026 to 11 JUN 2026

ELEV 584	TDZE 573
----------	----------



CATEGORY	A	B	C	D
LPV DA	899-1	326 (400-1)		NA
LNAV/VNAV DA	1215-1 $\frac{7}{8}$	642 (700-1 $\frac{7}{8}$)		NA
LNAV MDA	1120-1	547 (600-1)		NA
CIRCLING	1420-1 $\frac{1}{4}$	836 (900-1 $\frac{1}{4}$)		NA



MIRL Rwy 5-23 **①**
REIL Rwy 5 and 23 **①**