

APP CRS	Rwy Idg	<b>4397</b>
<b>055°</b>	TDZE	<b>1270</b>
	Apt Elev	<b>1270</b>

# RNAV (GPS) RWY 5

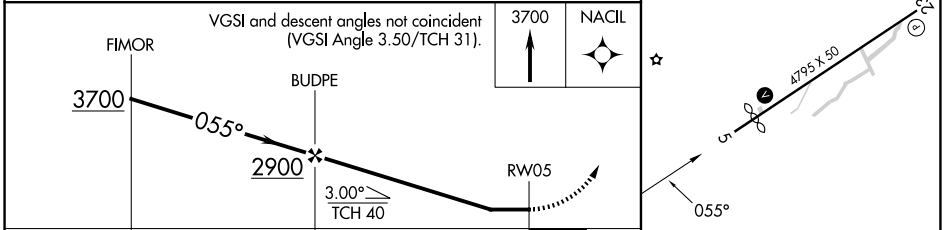
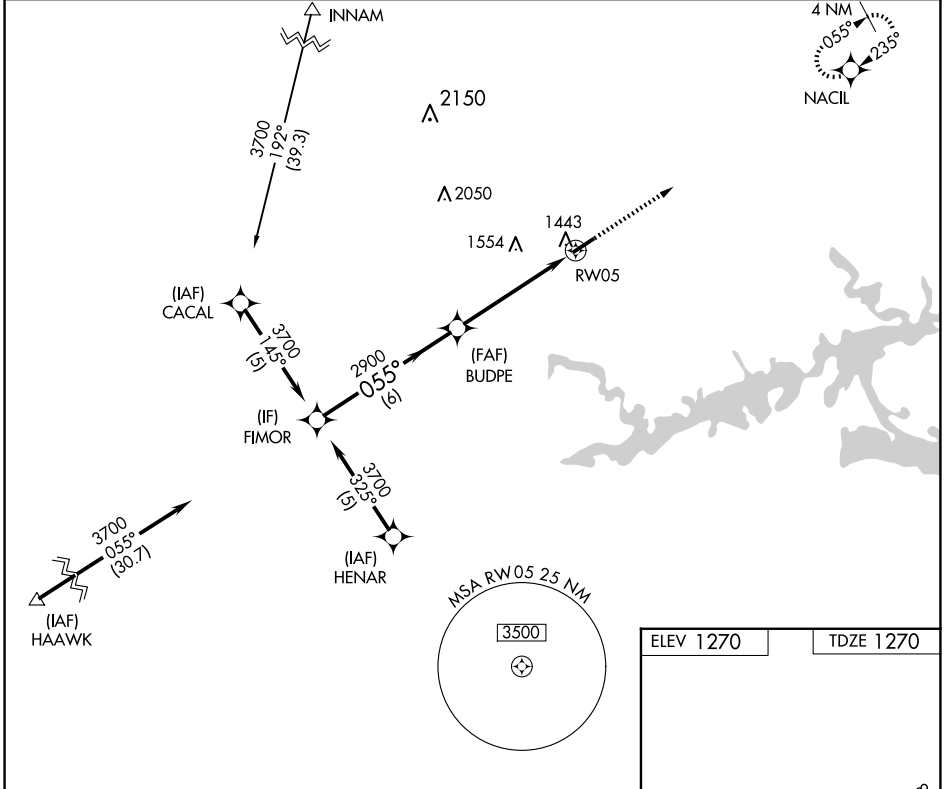
HOLLEY MOUNTAIN AIRPARK (2A2)

RNP APCH - GPS.

**▼** Rwy 5 helicopter visibility reduction below 1 SM NA. Straight-in Rwy 5 NA at night, Circling Rwy 5 NA at night. Obtain local altimeter setting on CTAf; when not received, use Marion County Rgnl altimeter setting and increase all MDAs 180 feet and LNAV visibilities Cat C ½ SM, and Circling visibility Cat C ¾ SM.

**▲ NA** MISSED APPROACH: Climb to 3700 direct NACIL and hold.

MEMPHIS CENTER <b>126.85 281.55</b>	UNICOM <b>122.7</b> (CTAF) <b>0</b>
--	--



CATEGORY	A	B	C	D
LNAV MDA	1760-1	490 (500-1)	1760-1 3/8 490 (500-1 3/8)	NA
CIRCLING	1800-1	530 (600-1)	1860-1 1/2 590 (600-1 1/2)	NA

ELEV 1270	TDZE 1270
-----------	-----------

MIRL Rwy 5-23 **0**  
REIL Rwy 5 and 23 **0**

SC-1, 14 MAY 2026 to 11 JUN 2026

SC-1, 14 MAY 2026 to 11 JUN 2026