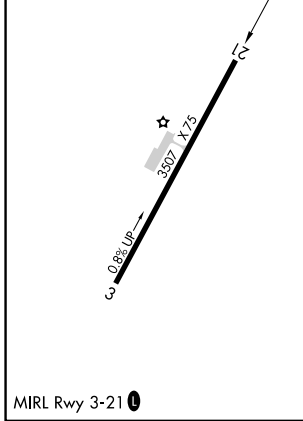
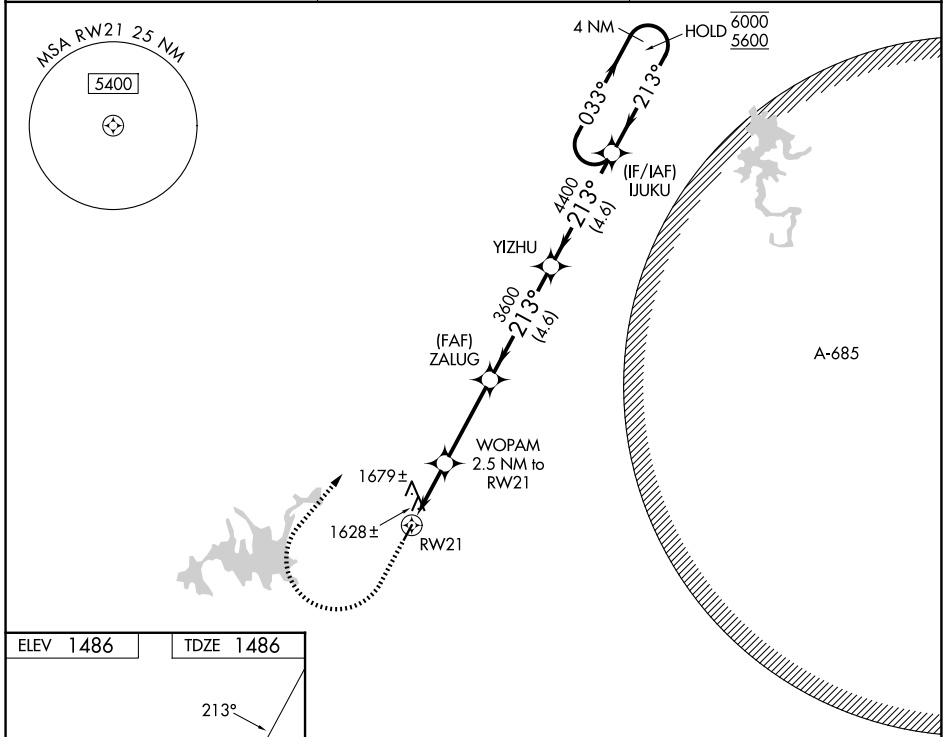


WAAS CH 86641 W21A	APP CRS 213°	Rwy Ldg TDZE 1486 Apt Elev 1486
--	------------------------	---

RNAV (GPS) RWY 21

GILMER COUNTY (49A)

RNP APCH - GPS.		MISSED APPROACH: Climb to 2500 then climbing right turn to 5700 direct IJUKU and hold, continue climb-in-hold to 5700.
Procedure NA at night. Rwy 21 helicopter visibility reduction below 1 SM NA.		
AWOS-3 118.075	ATLANTA CENTER 133.1 342.425	UNICOM 123.0 (CTAF)



ELEV 1486	TDZE 1486	2500	5700	IJUKU	Visual Segment - Obstacles.	IJUKU	4 NM Holding Pattern
		↑	↷	✧	ZALUG	YIZHU	6000 5600
		WOPAM 2.5 NM to RW21		ZALUG	YIZHU	033° → 6000 ← 213° 5600	
		RW21	2400	3600	4400		
		← 2.5 NM	← 3.4 NM	← 4.6 NM	← 4.6 NM		
CATEGORY	A	B	C	D			
LP MDA	1880-1	394 (400-1)	1880-1½	394 (400-1½)			
LNAV MDA	1940-1	454 (500-1)	1940-1¾	454 (500-1¾)			
CIRCLING	1980-1 494 (500-1)	2560-1½ 1074 (1100-1½)	2560-3	1074 (1100-3)			

SE-4, 14 MAY 2026 to 11 JUN 2026

SE-4, 14 MAY 2026 to 11 JUN 2026