

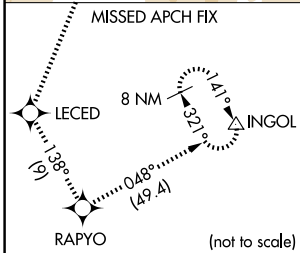
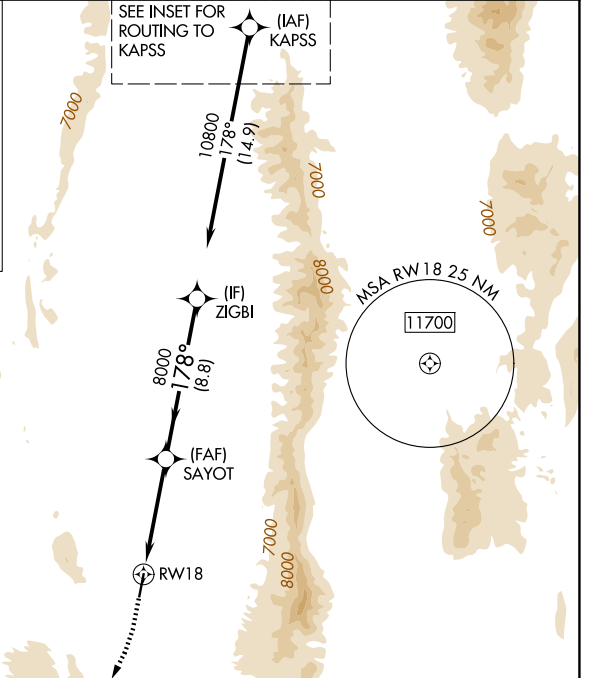
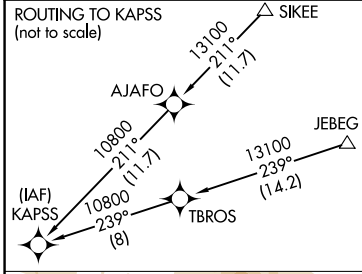
WAAS CH 42732 W18A	APP CRS 178°	Rwy Ldg TDZE Apt Elev	7300 5944 5958
---------------------------------	------------------------	-----------------------------	---

RNAV (GPS) RWY 18

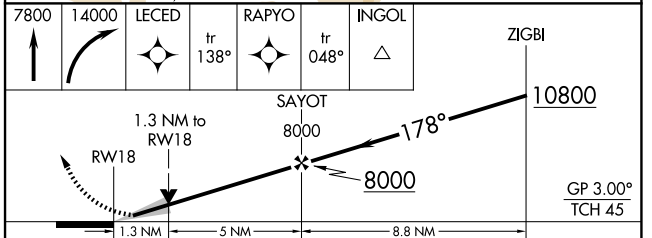
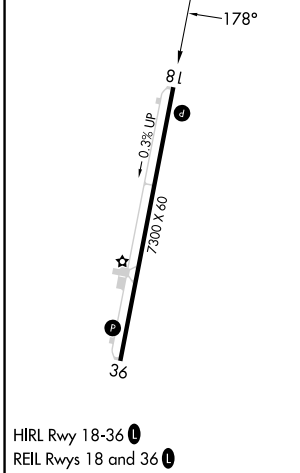
EUREKA (Ø5U)

RNP APCH - GPS.	MISSED APPROACH: Climb to 7800 then climbing right turn to 14000 direct LECED and on track 138° to RPYO and track 048° to INGOL and hold. *Missed approach requires minimum climb of 390 feet per NM to 10200. *Missed approach requires minimum climb of 390 feet per NM to 9900.
<p>⚠ Circling NA for Cat D west of Rwy 18-36. When local altimeter setting not received, procedure NA.</p> <p>❄ -17°C</p>	

AWOS-3 128.325	SALT LAKE CENTER 132.25 338.35	CTAF 122.90
--------------------------	--	-----------------------



ELEV 5958	TDZE 5944
-----------	-----------



CATEGORY	A	B	C	D
LPV DA*	6144-3/4 200 (200-3/4)			
LPV DA	7536-6 1592 (1600-6)			
LNAV MDA#	6400-1 456 (500-1)		6400-1 3/8 456 (500-1 3/8)	
LNAV MDA	7880-1 1/4 1936 (2000-1 1/4)		7880-3 1936 (2000-3)	
CIRCLING	7880-1 1/4 1922 (2000-1 1/4)		7880-3 1922 (2000-3)	

SW-4, 14 MAY 2026 to 11 JUN 2026

SW-4, 14 MAY 2026 to 11 JUN 2026