

(OPTEC1.OPTEC) 23110

# OPTEC ONE DEPARTURE (RNAV)

AL-9858 (FAA)

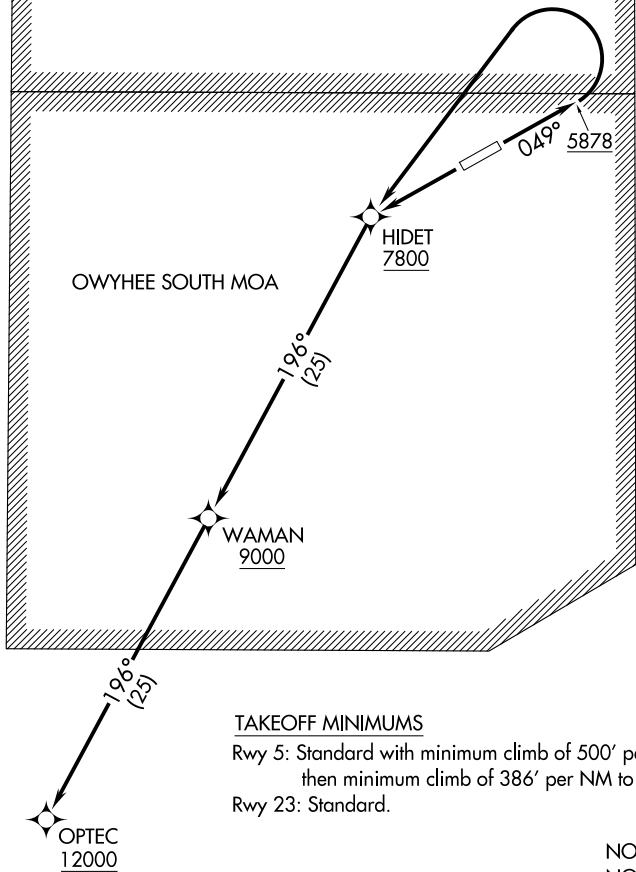
OWYHEE (10U)  
OWYHEE, NEVADA

SALT LAKE CENTER  
118.05 363.0  
AWOS-3PT  
118.525  
CTAF  
122.9

**TOP ALTITUDE:  
12000**

OWYHEE NORTH MOA

OWYHEE SOUTH MOA



### TAKEOFF MINIMUMS

Rwy 5: Standard with minimum climb of 500' per NM to 5878, then minimum climb of 386' per NM to 7500.

Rwy 23: Standard.

NOTE: GPS required.  
NOTE: RNAV 1.

NOTE: Chart not to scale.

### DEPARTURE ROUTE DESCRIPTION

TAKEOFF RUNWAY 5: Climb on heading 049° to 5878, then climbing left turn direct HIDE T, cross HIDE T at or above 7800, thence. . . .

TAKEOFF RUNWAY 23: Climb direct HIDE T, cross HIDE T at or above 7800, thence. . . .

. . . .climbing left turn on track 196° to cross WAMAN at or above 9000, then climb on track 196° to cross OPTEC at or above 12000.

# OPTEC ONE DEPARTURE (RNAV)

(OPTEC1.OPTEC) 17JUN21

OWYHEE, NEVADA  
OWYHEE (10U)

SW-4, 14 MAY 2026 to 11 JUN 2026

SW-4, 14 MAY 2026 to 11 JUN 2026