

WAAS CH 65740 W24A	APP CRS 236°	Rwy Ldg 6001 TDZE 4237 Apt Elev 4265
--	------------------------	---

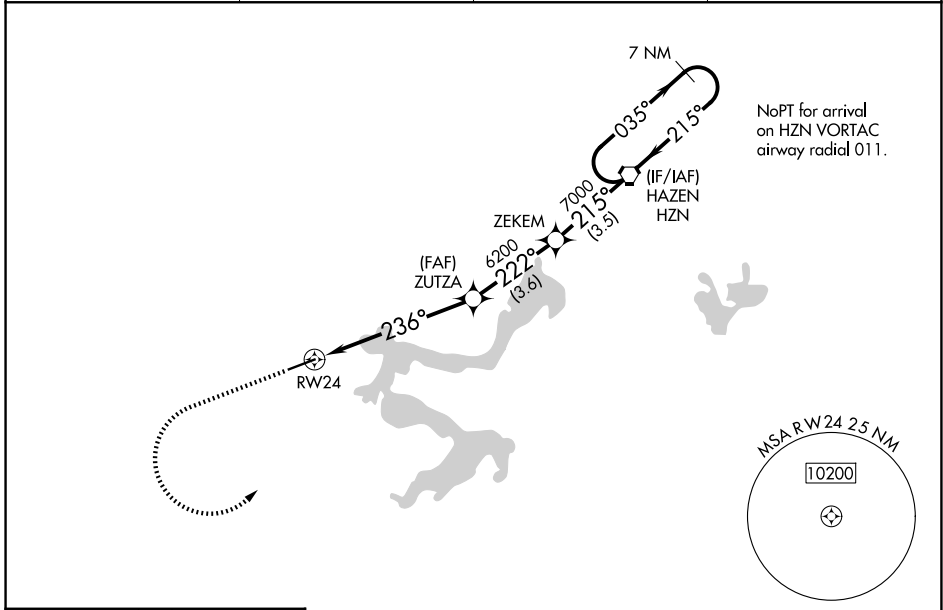
RNAV (GPS) RWY 24

SILVER SPRINGS (SPZ)

NA For uncompensated Baro-VNAV systems, LNAV/VNAV NA below -23°C (-9°F) or above 54°C (130°F). DME/DME RNP-0.3 NA. Use Fallon NAS (Van Voorhis Flt) altimeter setting; when not received, use Reno/Tahoe Intl altimeter setting.

MISSED APPROACH: Climb to 6900 then climbing left turn to 9900 direct HZN VORTAC and hold, continue climb-in-hold to 9900.
*Missed approach requires minimum climb of 315 feet per NM to 6900.

AWOS-2 120.475	KNFL ATIS* 370.925	NAVY FALLON APP CON 120.85 360.2	CTAF 122.90
--------------------------	------------------------------	--	-----------------------



ELEV 4265	TDZE 4237	6900	9900	HZN			
			ZUTZA	ZEKEM	HAZEN	7 NM Holding Pattern	
			6200	7000	8000		
			6200				GP 3.00° TCH 40
			6.1 NM	3.6 NM	3.5 NM		
CATEGORY	A	B	C	D			
LPV DA*	4593-1¼		356 (400-1¼)		NA		
LPV DA	5007-3		770 (800-3)		NA		
LNAV/VNAV DA	5209-4		972 (1000-4)		NA		
LNAV MDA	5280-1¼ 1043 (1100-1¼)	5280-1½ 1043 (1100-1½)	5280-3 1043 (1100-3)		NA		
CIRCLING	5280-1¼ 1015 (1100-1¼)	5620-1½ 1355 (1400-1½)	6040-3 1775 (1800-3)		NA		

SW-4, 14 MAY 2026 to 11 JUN 2026

SW-4, 14 MAY 2026 to 11 JUN 2026