

WAAS CH 56540 W28A	APP CRS 283°	Rwy Ldg TDZE Apt Elev	6000 4230 4230
--	------------------------	-----------------------------	---

RNAV (GPS) RWY 28

HAWTHORNE INDUSTRIAL (HTH)

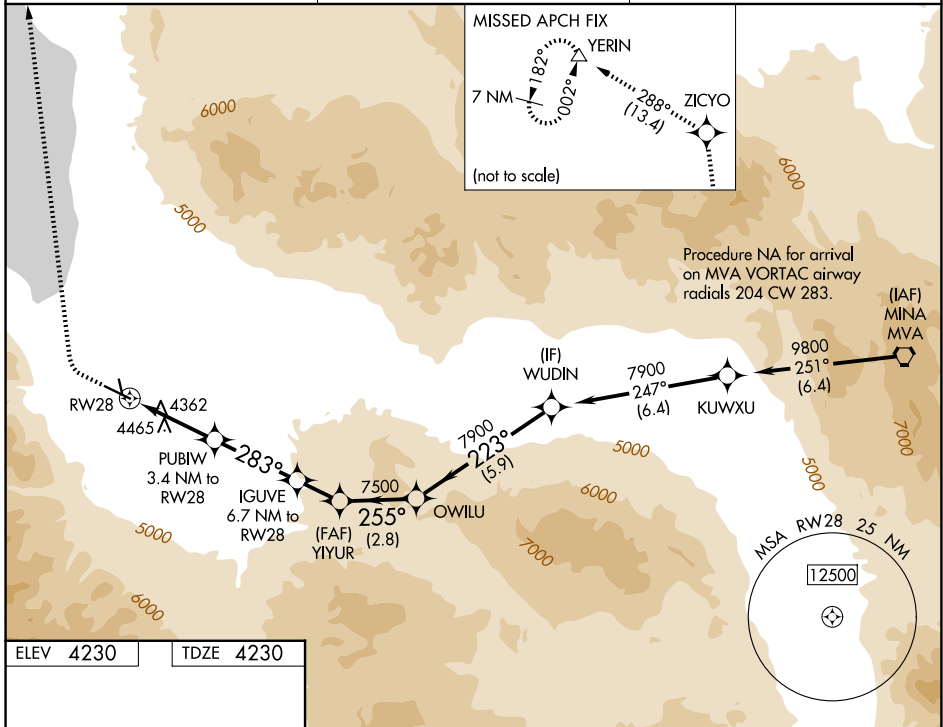
⚠ Circling NA to Rws 15 and 33. When local altimeter setting not received, procedure NA. Circling NA south of Rwy 10-28.
⚠ DME/DME RNP-0.3 NA. Rwy 28 helicopter visibility reduction below ¼ SM NA.

MISSED APPROACH: Climb to 4750 then climbing right turn to 10000 direct ZICYO and on track 288° to YERIN and hold.

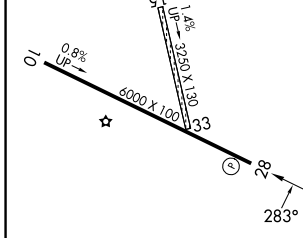
AWOS-3
120.225

OAKLAND CENTER
125.75 284.65

UNICOM
122.8 (CTAF) ①



ELEV 4230	TDZE 4230
-----------	-----------



4750	10000	ZICYO	tr 288°	YERIN	VGSI and descent angles not coincident (VGSI Angle 3.00/TCH 42).
------	-------	-------	---------	-------	--

	YIYUR	OWILU	WUDIN
	7900	7900	7900
	255°	223°	283°
	6840	7500	5580
	1.1 NM	2.3 NM	3.3 NM
	1.7 NM	2.8 NM	5.9 NM

CATEGORY	A	B	C	D
LP MDA	4620-1	390 (400-1)	4620-1½ 390 (400-1½)	NA
LNAV MDA	4720-1	490 (500-1)	4720-1¾ 490 (500-1¾)	NA
CIRCLING	4720-1	490 (500-1)	5680-3 1450 (1500-3)	NA

REIL Rws 10 and 28 ①
 MIRL Rwy 10-28 ①

SW-4, 14 MAY 2026 to 11 JUN 2026

SW-4, 14 MAY 2026 to 11 JUN 2026