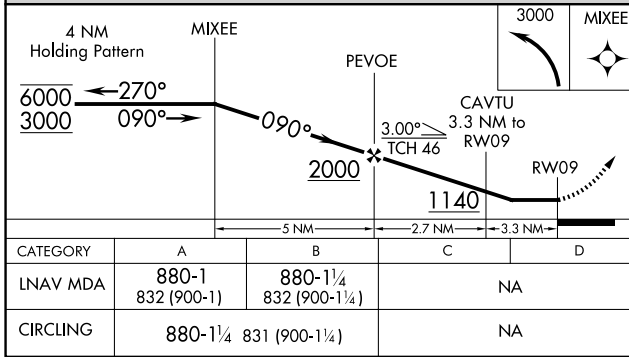
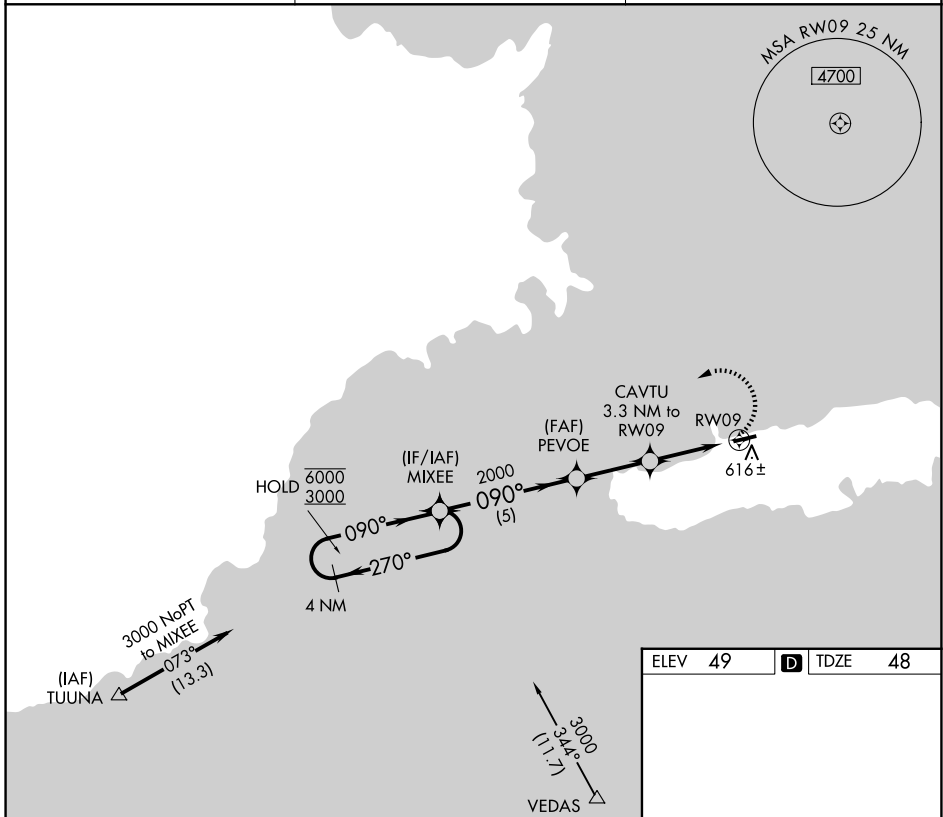


APP CRS	Rwy Ldg	<b>4094</b>
<b>090°</b>	TDZE	<b>48</b>
	Apt Elev	<b>49</b>

# RNAV (GPS) RWY 9

ANTONIO RIVERA RODRIGUEZ (VQS)(TJVQ)

RNP APCH-GPS.		MISSED APPROACH: Climbing left turn to 3000 direct MIXEE and hold.
⚠ NA Circling NA south of Rwy 9-27. Rwy 9 helicopter visibility reduction below 1 SM NA. Procedure NA at night. Use SJU/TJSJ altimeter setting.		
SJU/TJSJ ASOS <b>125.8</b>	SAN JUAN CERAP APP CON <b>128.65 279.6</b>	UNICOM <b>123.0 (CTAF)</b>



ELEV	<b>49</b>	<b>D</b> TDZE	<b>48</b>
------	-----------	---------------	-----------

CATEGORY	A	B	C	D
LNVA MDA	880-1 832 (900-1)	880-1¼ 832 (900-1¼)		NA
CIRCLING	880-1¼ 831 (900-1¼)			NA

MIRL Rwy 9-27

SE-3, 14 MAY 2026 to 11 JUN 2026

SE-3, 14 MAY 2026 to 11 JUN 2026