

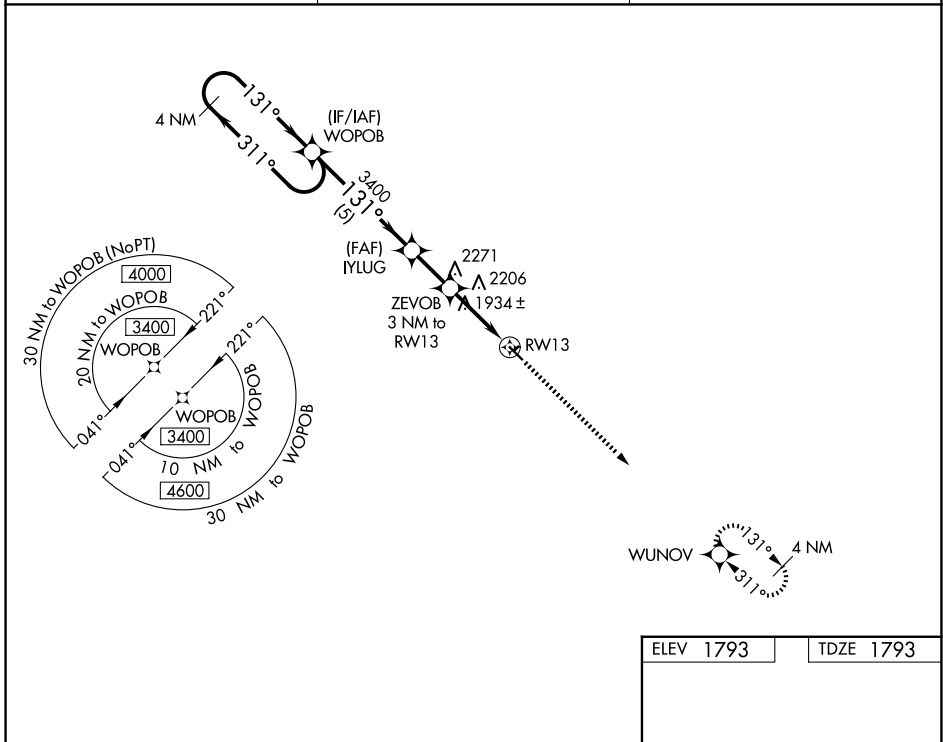
WAAS CH 58340 W13A	APP CRS 131°	Rwy Ldg TDZE Apt Elev	3697 1793 1793
--	------------------------	-----------------------------	---

RNAV (GPS) RWY 13

CLARK COUNTY (8D7)

RNP APCH. ▼ Rwy 13 helicopter visibility reduction below 3/4 SM NA. ▲ NA Use Watertown altimeter setting. Circling NA to Rwys 3 and 21.	MISSED APPROACH: Climb to 3400 direct WUNOV and hold.
--	---

ATY ASOS 126.625	MINNEAPOLIS CENTER 128.5 306.2	UNICOM 122.8 (CTAF) 0
----------------------------	--	---------------------------------



NC-1, 14 MAY 2026 to 11 JUN 2026

NC-1, 14 MAY 2026 to 11 JUN 2026

ELEV 1793	TDZE 1793
-----------	-----------

Detailed diagram of RWY 13 showing a 1200-foot runway with a 125-foot shoulder. The approach path is shown with a 3.00° descent angle and a 131° track. A 4 NM holding pattern is indicated at the top left.

CATEGORY	A	B	C	D
LP MDA	2260-1	467 (500-1)		NA
LNAV MDA	2400-1	607 (700-1)		NA
CIRCLING	2400-1	607 (700-1)		NA

MIRL Rwy 13-31 0