

WAAS CH 53622 W23A	APP CRS 232°	Rwy Ldg TDZE 441 Apt Elev 441
--	------------------------	---

RNAV (GPS) RWY 23

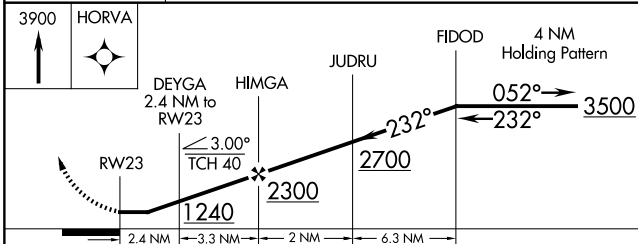
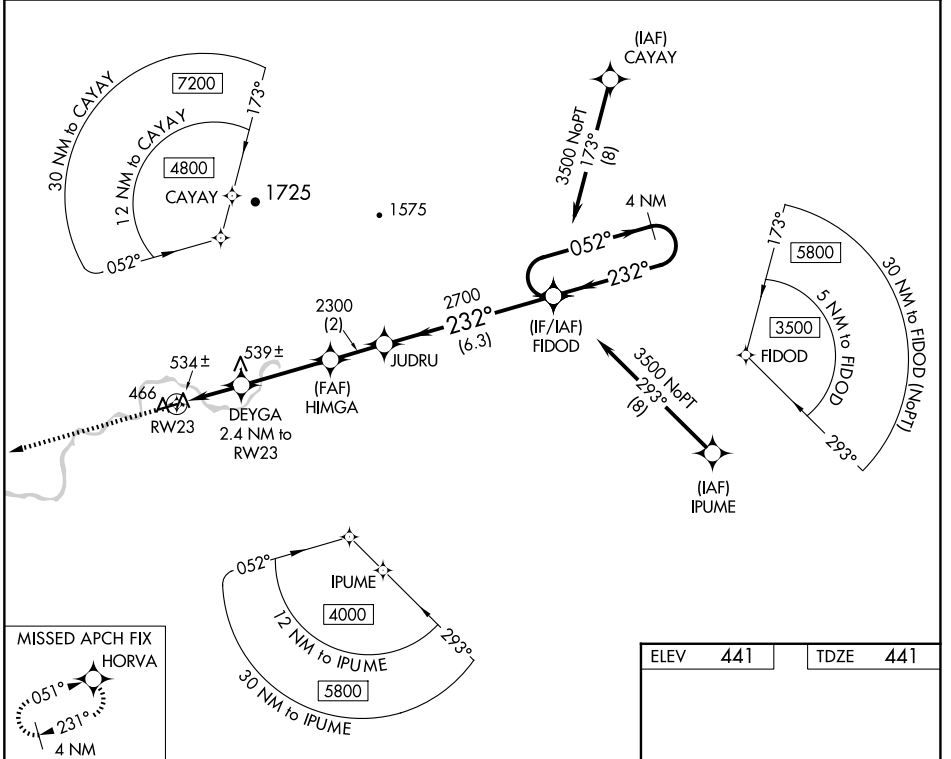
ALLAKAKET (6A8) (PFAL)

NA
-43°C

DME/DME RNP-0.3 NA. Visibility reduction by helicopter below ¾ SM NA. Use Bettes altimeter setting.

MISSED APPROACH: Climb to 3900 direct HORVA and hold, continue climb-in-hold to 3900.

BTT/PABT ASOS 135.45	ANCHORAGE CENTER 124.6 352.0	FAIRBANKS RADIO 122.2	CTAF 122.9
--------------------------------	--	---------------------------------	----------------------



CATEGORY	A	B	C	D
LP MDA	900-1	459 (500-1)	900-1 3/8 459 (500-1 3/8)	NA
LNAV MDA	900-1	459 (500-1)	900-1 3/8 459 (500-1 3/8)	NA
CIRCLING	1100-1 659 (700-1)	1220-1 779 (800-1)	1240-2 1/4 799 (800-2 1/4)	NA

ELEV 441	TDZE 441
-----------------	-----------------

MIRL Rwy 5-23

AK, 14 MAY 2026 to 09 JUL 2026

AK, 14 MAY 2026 to 09 JUL 2026