

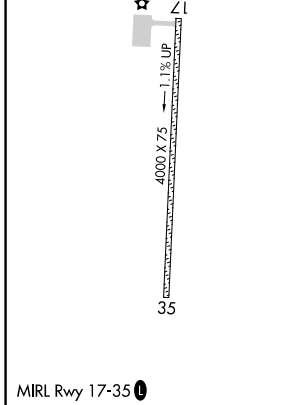
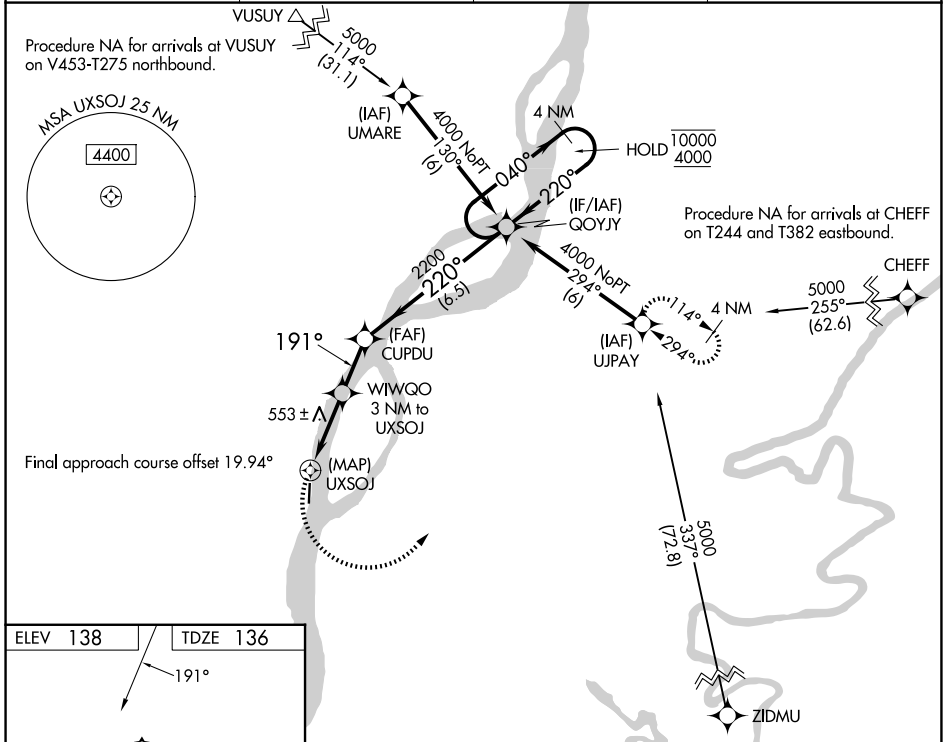
WAAS CH 93540 W17A	APP CRS 191°	Rwy Ldg TDZE 136 Apt Elev 138	4000
--	------------------------	---	-------------

RNAV (GPS) RWY 17

GRAYLING (KGX)(PAGX)

RNP APCH - GPS.	MISSED APPROACH: Climbing left turn to 4000 direct UJPAY and hold, continue climb-in-hold to 4000.
<p>▼ Rwy 17 helicopter visibility reduction below ¾ SM NA. Circling</p> <p>▲ NA NA west of Rwy 17-35. Use SHX/PAHX altimeter setting; when</p> <p>❄ -23°C not received use ANV/PANV altimeter setting.</p>	

SHX/PAHX AWOS-3P 121.575	ANCHORAGE CENTER 118.15 251.05	KENAI RADIO 122.4	CTAF 122.9 0
------------------------------------	--	-----------------------------	------------------------



4000 UJPAY	GOYJY	4 NM Holding Pattern		
WIWQO 3 NM to UXSOJ	CUPDU	040° → 10000 ← 220° 4000		
UXSOJ	2200			
0.5	3 NM	2.1 NM	6.5 NM	
≤ 3.48° TCH 40				
191°	220°			
1420	2200			
CATEGORY	A	B	C	D
LP MDA	860-1	724 (800-1)		NA
LNAV MDA	1360-1¼ 1224 (1300-1¼)	1360-1½ 1224 (1300-1½)		NA
CIRCLING	1360-1¼ 1222 (1300-1¼)	1360-1½ 1222 (1300-1½)		NA

AK, 14 MAY 2026 to 09 JUL 2026

AK, 14 MAY 2026 to 09 JUL 2026