

WAAS CH 68560 W34B	APP CRS 340°	Rwy Idg TDZE Apt Elev	5020 4529 4534
----------------------------------------	------------------------	-----------------------------	-------------------------------------------

RNAV (GPS) RWY 34

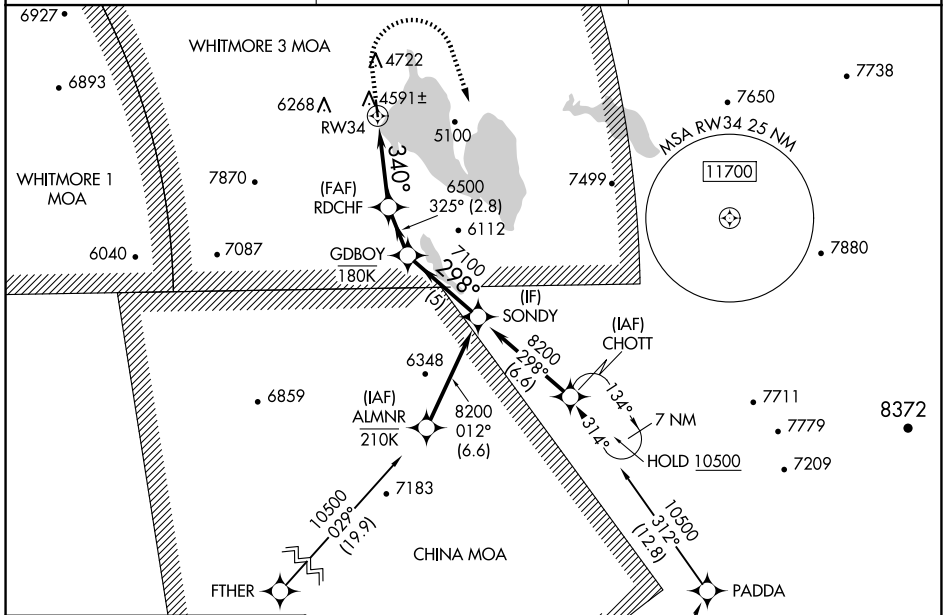
ROGERS FLD (005)

RNP APCH - GPS.

▼ When local altimeter setting not received, procedure NA.
▲ Rwy 34 helicopter visibility reduction below $\frac{3}{4}$ SM NA.
 Circling NA for Cat C west of Rwy 16-34. Circling NA at night.

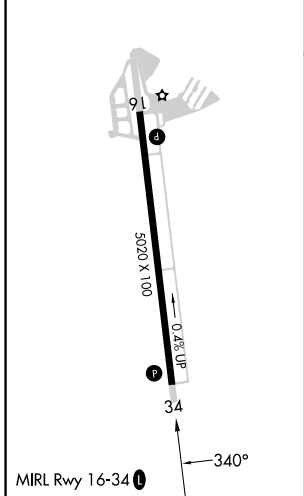
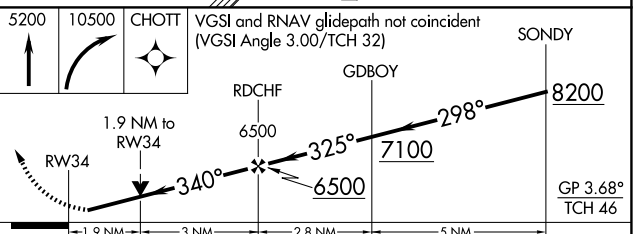
MISSED APPROACH: (Do not exceed 165K until initial turn completion) Climb to 5200 then climbing right turn to 10500 direct CHOTT and hold, continue climb-in-hold to 10500.
 *Missed approach requires a minimum climb of 377 feet per NM to 7680 feet.

AWOS-3 118.275	OAKLAND CENTER 132.2 350.3	UNICOM 122.8(CTAF)
--------------------------	--------------------------------------	------------------------------



ELEV 4534	TDZE 4529
-----------	-----------

Procedure NA for arrivals at MRGGO on V200 westbound.



CATEGORY	A	B	C	D
LPV DA*	4779- $\frac{3}{4}$	250 (300- $\frac{3}{4}$)	4829- $\frac{7}{8}$ 300 (300- $\frac{7}{8}$)	NA
LNAV MDA*	5160-1	631 (700-1)	5160-1 $\frac{3}{4}$ 631 (700-1 $\frac{3}{4}$)	NA
LNAV MDA	5360-1 831 (900-1)	5360-1 $\frac{1}{4}$ 831 (900-1 $\frac{1}{4}$)	5360-2 $\frac{1}{2}$ 831 (900-2 $\frac{1}{2}$)	NA
CIRCLING	5440-1 $\frac{1}{4}$ 906 (1000-1 $\frac{1}{4}$)	5660-1 $\frac{1}{2}$ 1126 (1200-1 $\frac{1}{2}$)	5660-3 1126 (1300-3)	NA

SW-2, 14 MAY 2026 to 11 JUN 2026

SW-2, 14 MAY 2026 to 11 JUN 2026