

WAAS CH <b>49203</b> W26A	APP CRS <b>256°</b>	Rwy Idg TDZE <b>4651</b> Apt Elev <b>4900</b>
---------------------------------	------------------------	---

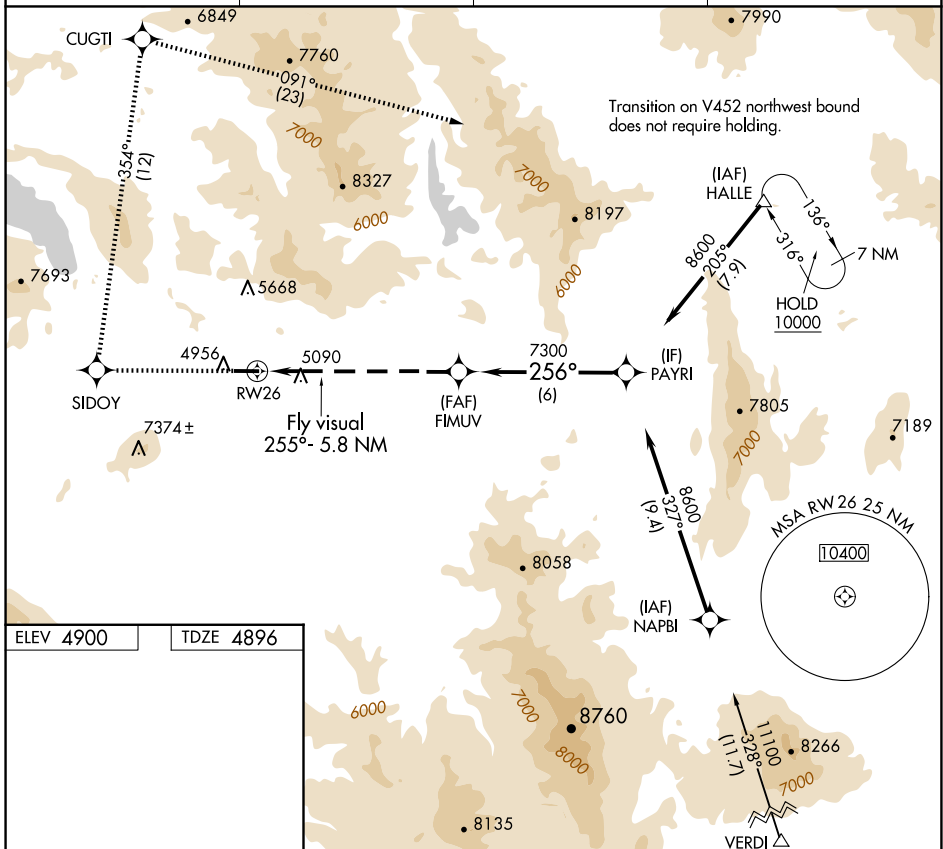
# RNAV (GPS) Z RWY 26

NERVINO (002)

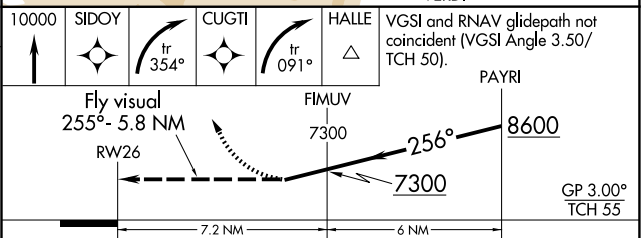
**NA** Use Reno/Stead altimeter setting; when not received, use Reno/Tahoe Intl altimeter setting and increase DA 180 feet.  
**13°C** DME/DME RNP -0.3 NA.  
 Helicopter visibility reduction below 3/4 SM not authorized.

**MISSED APPROACH:** Climb to 10000 direct SIDOY and right turn on track 354° to CUGTI and right turn on track 091° to HALLE and hold.

AWOS-2 <b>119.35</b>	RTS AWOS-3 <b>135.175</b>	NORCAL APP CON <b>126.3 353.9</b>	UNICOM <b>122.8</b> (CTAF) <b>0</b>
-------------------------	------------------------------	--------------------------------------	--



ELEV 4900	TDZE 4896
-----------	-----------



CATEGORY	A	B	C	D
LPV DA	6787-2	1891 (1900-2)	6787-3	1891 (1900-3)

SW-2, 14 MAY 2026 to 11 JUN 2026

SW-2, 14 MAY 2026 to 11 JUN 2026