

(GKN2.GKN) 26022

AL-10059 (FAA)

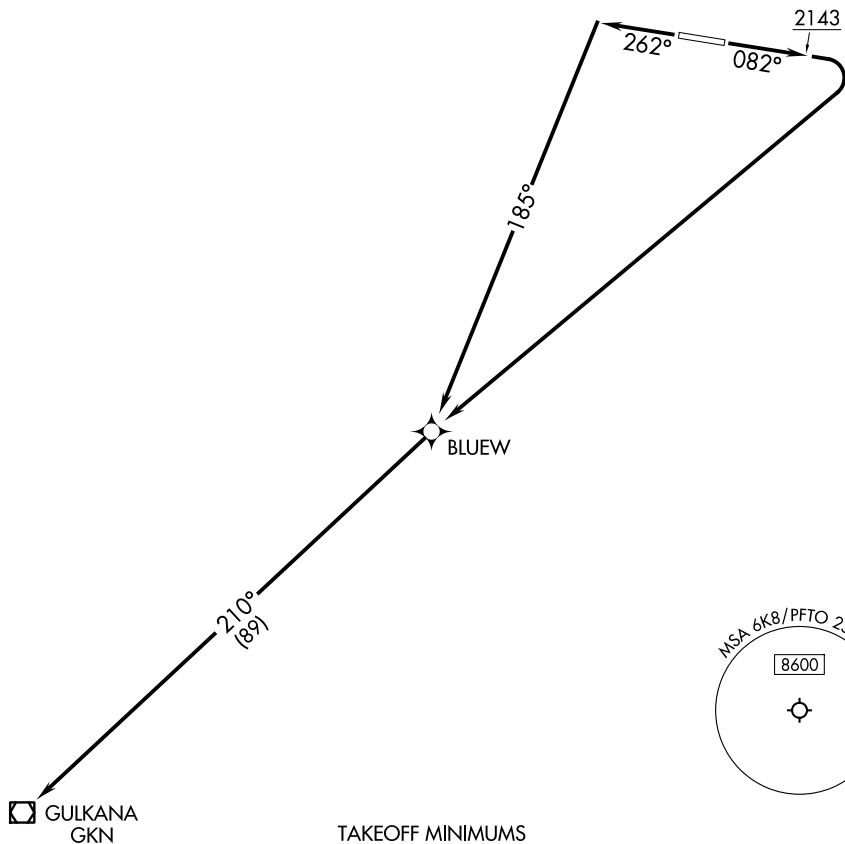
TOK JUNCTION (6K8)(PFTO)  
TOK, ALASKA

# GULKANA TWO DEPARTURE(RNAV)

ANCHORAGE CENTER  
126.55 323.0  
AWOS-3P  
118.1  
NORTHWAY RADIO  
122.4

RNAV 1 - GPS.

**TOP ALTITUDE:  
ASSIGNED BY ATC**



### TAKEOFF MINIMUMS

Rwy 8: Standard with a minimum climb of 291'/NM to 8500.  
Rwy 26: Standard with a minimum climb of 295'/NM to 8500.

NOTE: Chart not to scale.



### DEPARTURE ROUTE DESCRIPTION

TAKEOFF RUNWAY 8: Climb on heading 082° to 2143, then right turn direct BLUEW, thence . . . .

TAKEOFF RUNWAY 26: Climb on heading 262° to intercept course 185° to BLUEW, thence . . . .

. . . then on track 210° to GKN VOR/DME, then on assigned route. Maintain ATC assigned altitude, expect assigned altitude 10 min after departure.

GULKANA TWO DEPARTURE(RNAV)  
(GKN2.GKN) 22JAN26

TOK, ALASKA  
TOK JUNCTION (6K8)(PFTO)

AK, 14 MAY 2026 to 09 JUL 2026

AK, 14 MAY 2026 to 09 JUL 2026